



DS Series Recorders

NVR for IP cameras



APP Guard Manual Viewer

How to install and use the mobile app



Contents of this handbook

This manual describes how to install and use the APP Guard Viewer that allows remote management of DSE video recorders Series DS from mobile devices and tablets. Guard Viewer is available for Android OS and Apple iOS (iPhone, iPad).

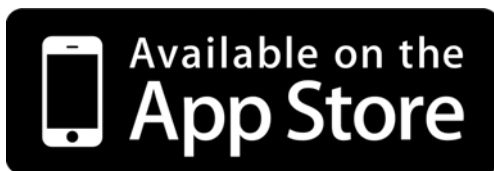


APP Installation

The application for the management of video recorders DS Series smartphone or tablet is called

GUARD VIEWER

E 'can download the version for Apple devices (iOS) directly from the Apple Store or the version for Android devices from Google Play.



Guard Viewer is not available for other mobile operating systems now less used as Windows Mobile, Blackberry, Symbian etc.



APP Configuration

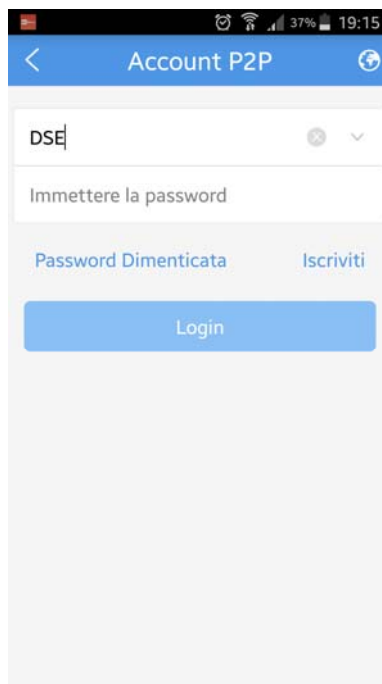
The Viewer Guard program appears on your mobile device with this icon



Tap the icon to launch the app on the device.

FIRST PERFORMANCE - ACCESS TO CLOUD SERVER

The first thing that comes to your proposal at boot-application has access to the cloud server (P2P LOGIN)



In the installation manual we explained how to enter the cloud www.star4live.com server with a computer. If you have an account and you have uploaded your NVR server, P2P can press ENTER to connect the app to your personal area in the cloud and in the app to find the NVR or NVR you've loaded on it.

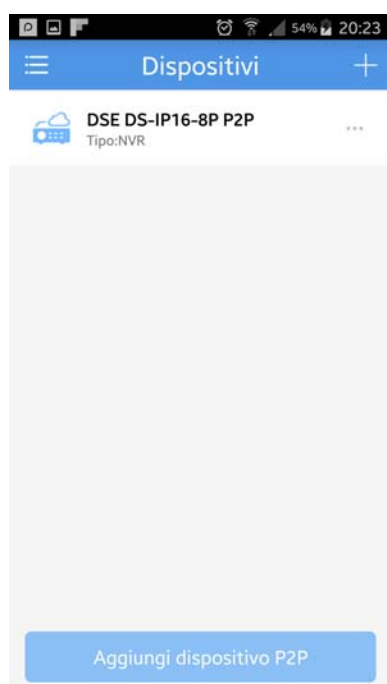
You will be prompted to type your user name and password you chose to access the cloud server. You will not need to log in again in the future use of the application.



Of course, to log in to the cloud server requires that you have a mobile data connection or wifi.

Detailed instructions to create an account in the cloud servers are located in the installation manual.

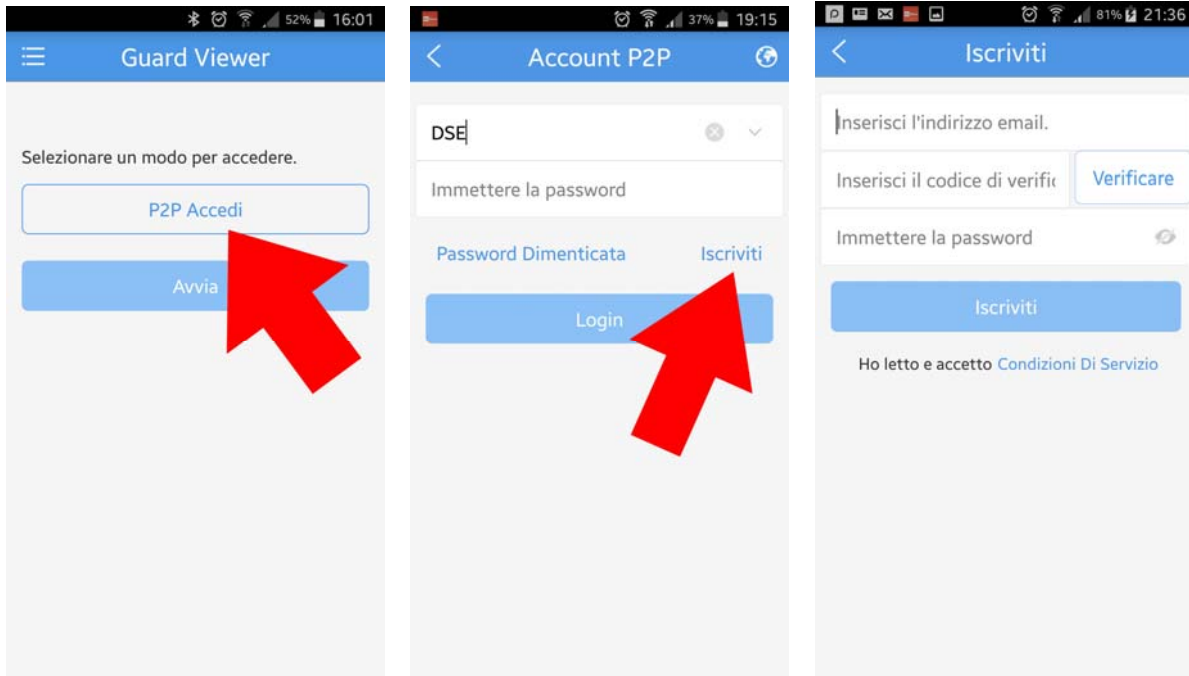
If you have already uploaded your NVR in the cloud server through the computer, you find yourself already your device on the device list, and you can skip the following chapters on how to add an NVR application.



If you do not use our cloud server, because they prefer to go straight to your public IP address, you can directly press START to start the application.

FIRST TIME - ENROLLMENT IN THE CLOUD SERVER

If you have not created an account in the cloud server via computer, as explained in the installation manual, you can do it now with the mobile application. Awards P2P LOGIN and then JOIN. You can subscribe to the cloud server by choosing a username and password.

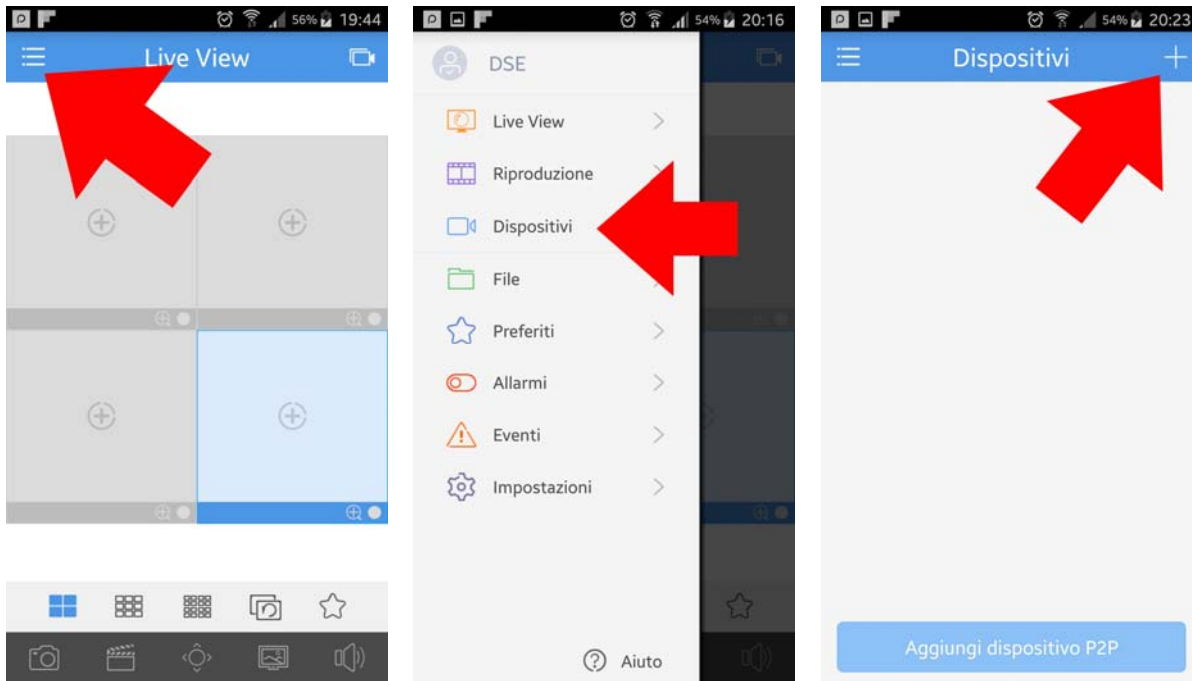


To complete the registration you must have the ability to download e-mail from your mailbox used to sign up, because it sends a verification code.

LOAD NVR

You can upload an NVR in the application in two ways. can load the NVR in your account on the P2P server with her in the Registration Code so that it is accessible via the Internet without static IP. Alternatively you can load the local NVR app manually by entering the IP address. In the latter case, you can use the internal IP address of your network (the type 192.168.0.30), if you just go NVR within your network, or you can enter the IP address of your router on the side Internet (like 217.16.128.45) if you want to access directly from the Internet (requested in this case fixed and IP router port mapping)

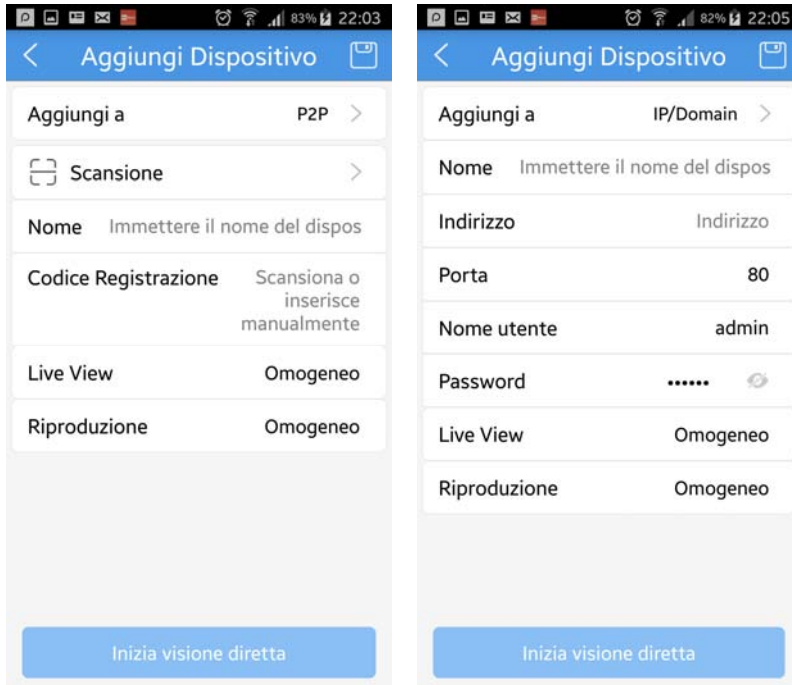
To load an NVR, press the button at the top left to open the drop down menu and then choose DEVICES. To manually add the NVR + awards



It will be offered three possibilities:

Autosearch - If your phone is connected to the NVR network can quickly search for it on the net
SCAN - You can scan the qr code that you find in the menu of the NVR in the section NETWORK / P2P
MANUALLY ADD - To enter data manually

We see below the manual procedure that is the most complete.



ADD A - You can decide whether to add the NVR to your account in the cloud P2P or manually by entering the IP address. This change choice items available in the window.

ADD NVR THE CLOUD P2P

SCAN - If you stand in front of the NVR monitor can scan the qr code that you find in the menu of the NVR NETWORK / P2P section.

NAME - Give a unique name that identifies this NVR

CODE REGISTRATION - If you have not used the scan, you can manually insert here the registration code that you find in the menu of

the NVR, the NETWORK / P2P section. LIVE VIEW - You can choose from 3 modes of the video stream management: *CLEAR*: Maximum video quality, requires a lot of bandwidth; *HOMOGENEOUS*: It privileges the video fluidity, recommended via the Internet;

BALANCED: Automatic quality management. PLAY - As mentioned in the vision of the recorded files

ADD NVR WITH IP ADDRESS

NAME - Give a unique name that identifies this NVR

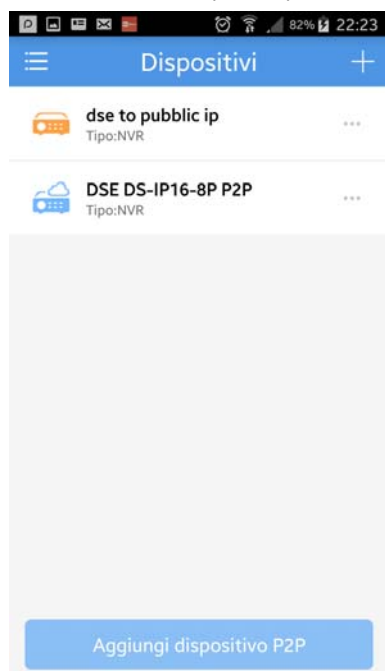
ADDRESS - Enter the IP address of the NVR. You can also enter the name of DDNS domain if you are using this type of service.

DOOR - Enter the port used by the mobile NVR (6060)



USERNAME / PASSWORD - Enter the credentials to access the NVR LIVE VIEW - You can choose from 3 modes of the video stream management: **CLEAR**: Maximum video quality, requires a lot of bandwidth; **HOMOGENEOUS**: It privileges the video fluidity, recommended via the Internet; **BALANCED**: Automatic quality management. **PLAY** - As mentioned in the vision of the recorded files

At the end of the compilation press the SAVE icon in the upper right



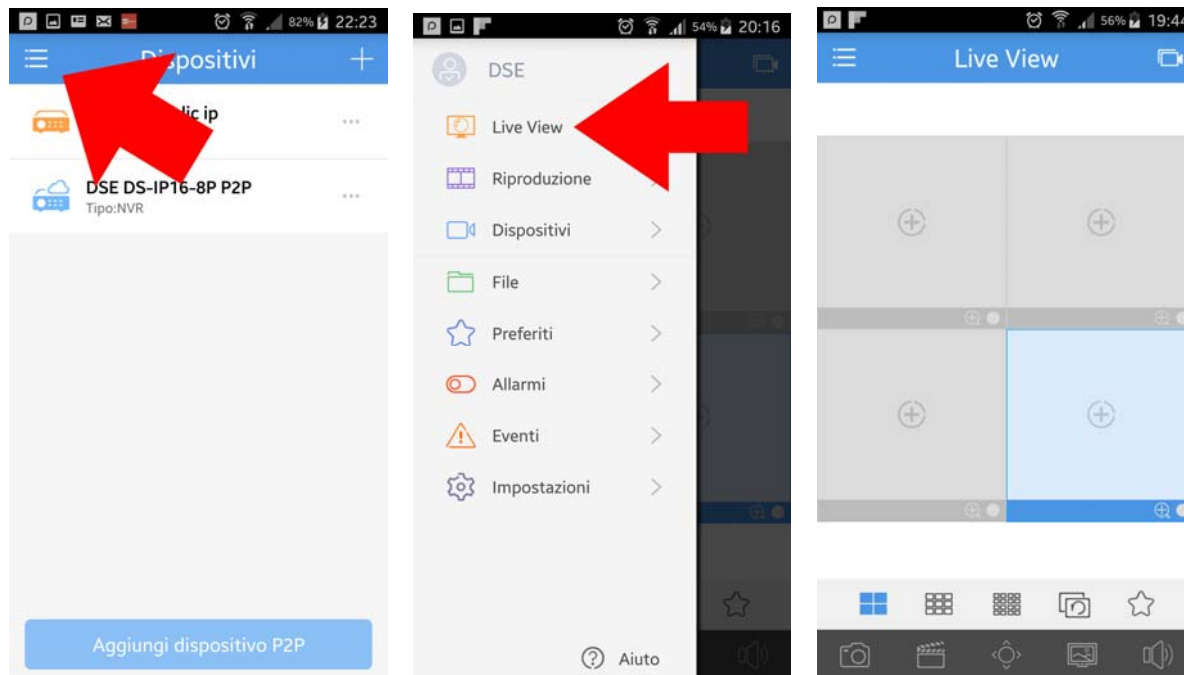
In the list of devices are in blue NVRs uploaded to the cloud server and orange NVRs entered with manual IP.

If the icon is gray it means that NVR is not reachable and you have to control the parameters you entered.

CAUTION: Because the connection to the cloud server to act need to enable the UPNP function in NVR and router. Check in NVR settings that MSI status is indicated as ACTIVE. See installation manual.

Live Viewing

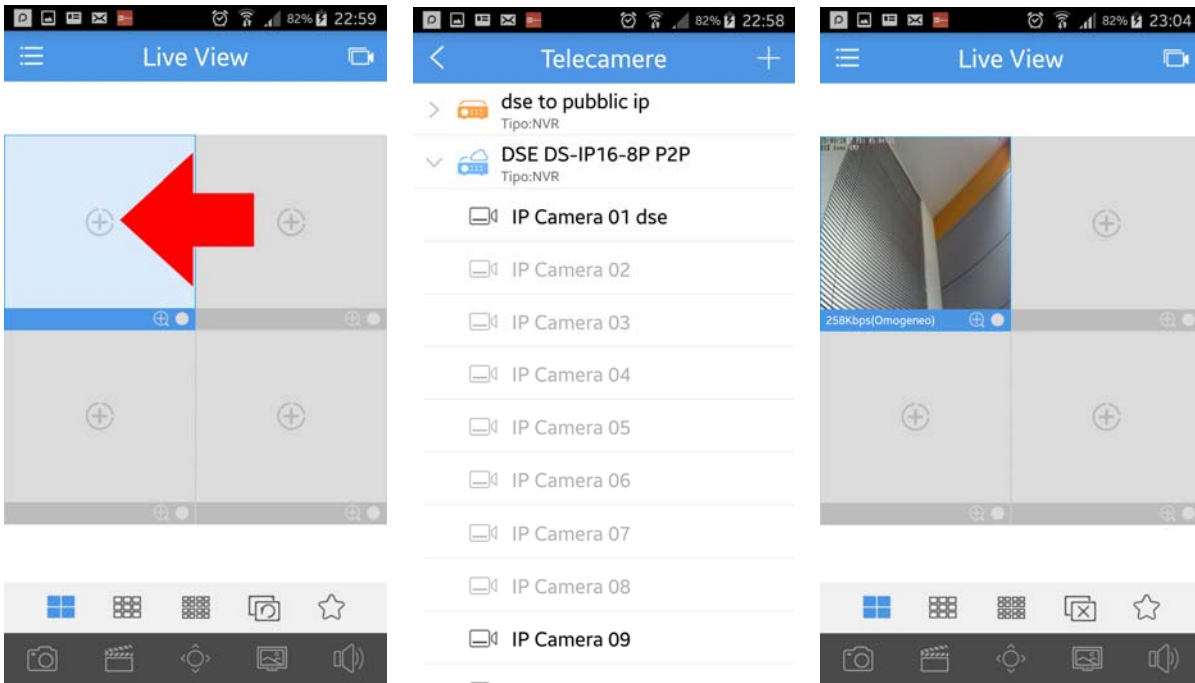
To open the live click LIVE VIEW vision in the popup menu



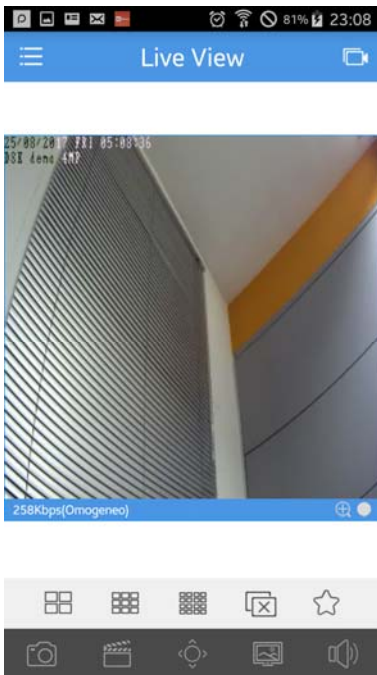
Pressing the buttons multivision you can split the screen into quadrants 4,9,16

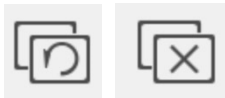


To begin playback of a video camera touch the + sign at the center of the frame, and select it in the device list.



You can bring your camera full screen with a double tap and zoom with the classic gesture of the pinch. If you rotate the screen you can view the camera more naturally formed, but to do so you must first unlock the screen rotation in the APP settings.





With this button you can stop playback of all cameras

screen. Pressing the button restores the last live composition that has been closed.



This button adds the selected camera to FAVORITES that are included in a separate section in the popup menu to be easily recalled.



With these buttons you can take pictures and record short video clips live. THE

Movies are saved in the mobile device and you can review in the FILES section of the popup menu.



This button is used to control motorized cameras



This button allows you to choose the video flow control modes:

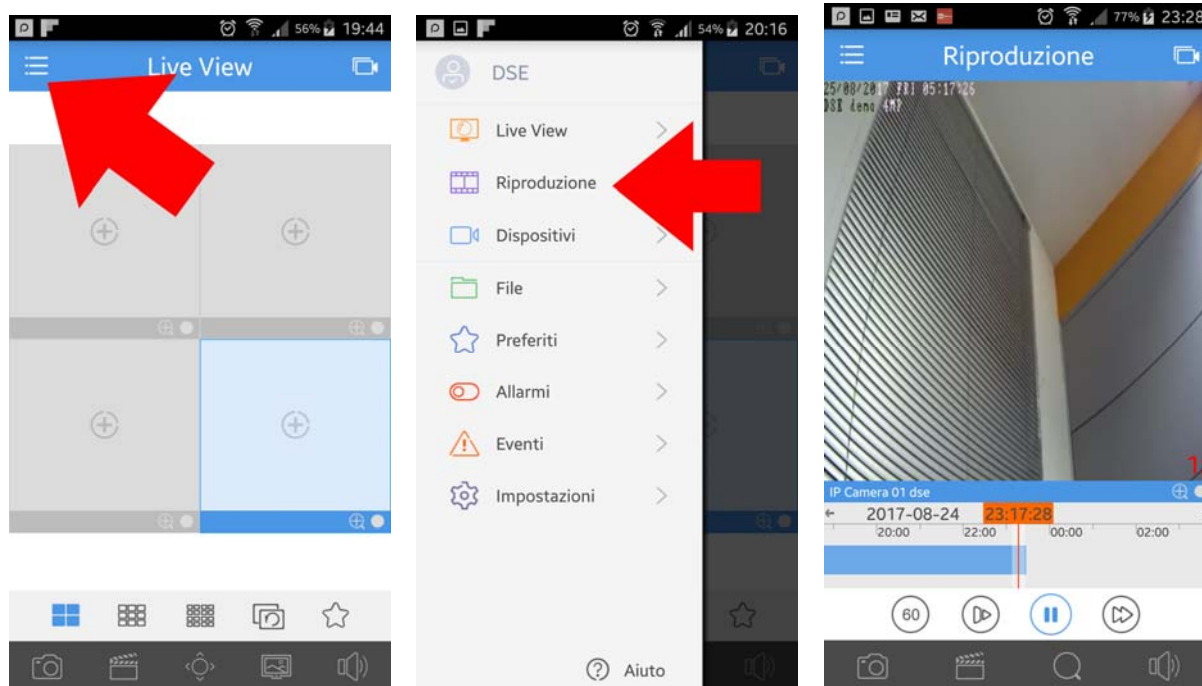
CLEAR: Maximum video quality, requires a lot of bandwidth; **HOMOGENEOUS:** It privileges the video fluidity, recommended via the Internet; **BALANCED:** Automatic quality management.



Enable audio playback

Playback

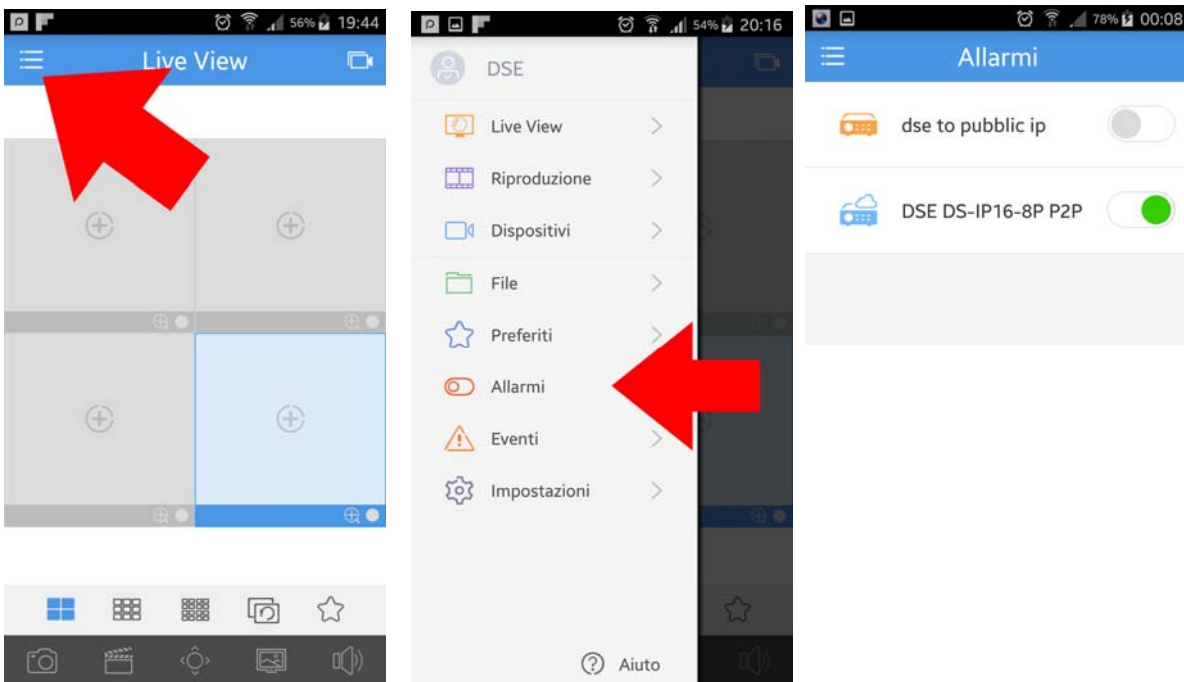
With the APP Guard Viewer you can review the records kept nell'NVR



You can search by date and time and move easily by touching the time bar

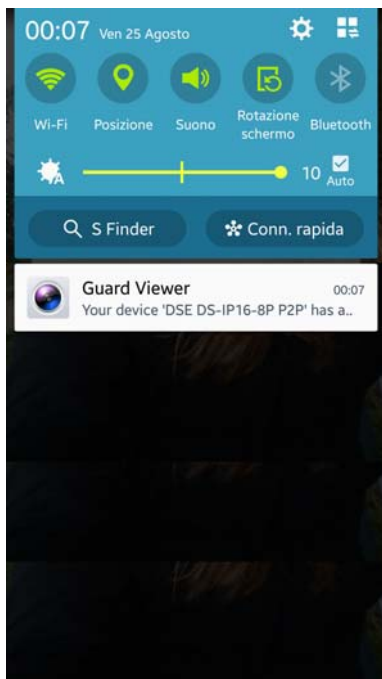
Alarms and Events

With the APP Guard NVR Viewer you can receive alerts in the form of PUSH notification, even when the app is not running, and you can consult them in the EVENTS section. To receive alarms from an NVR you need to enable them in the application. You can receive push notifications only by NVR registered on the cloud server



Upon the occurrence of an event you will be notified of this type, although Guard Viewer was not running. On your mobile device you can be programmed sound alerts for incoming notification.

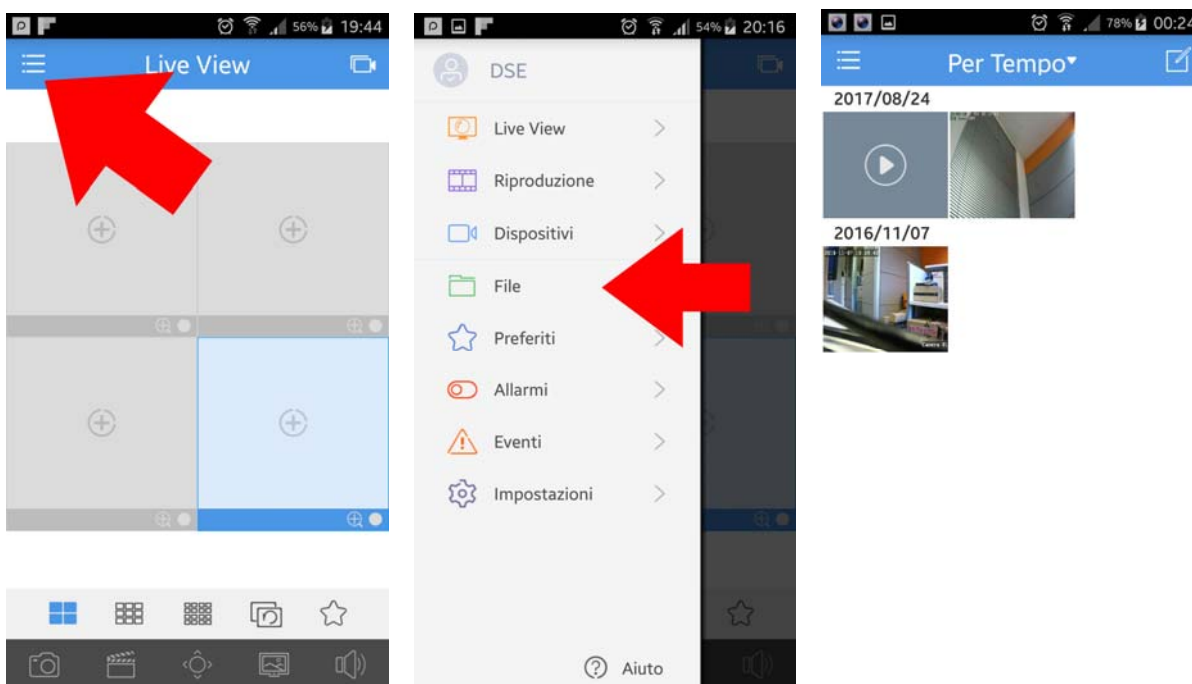
Clicking on the notification will open the application that will show you the historical events. Next to each event you can find the icon to launch the Live Vision camera or recording directly when the alarm



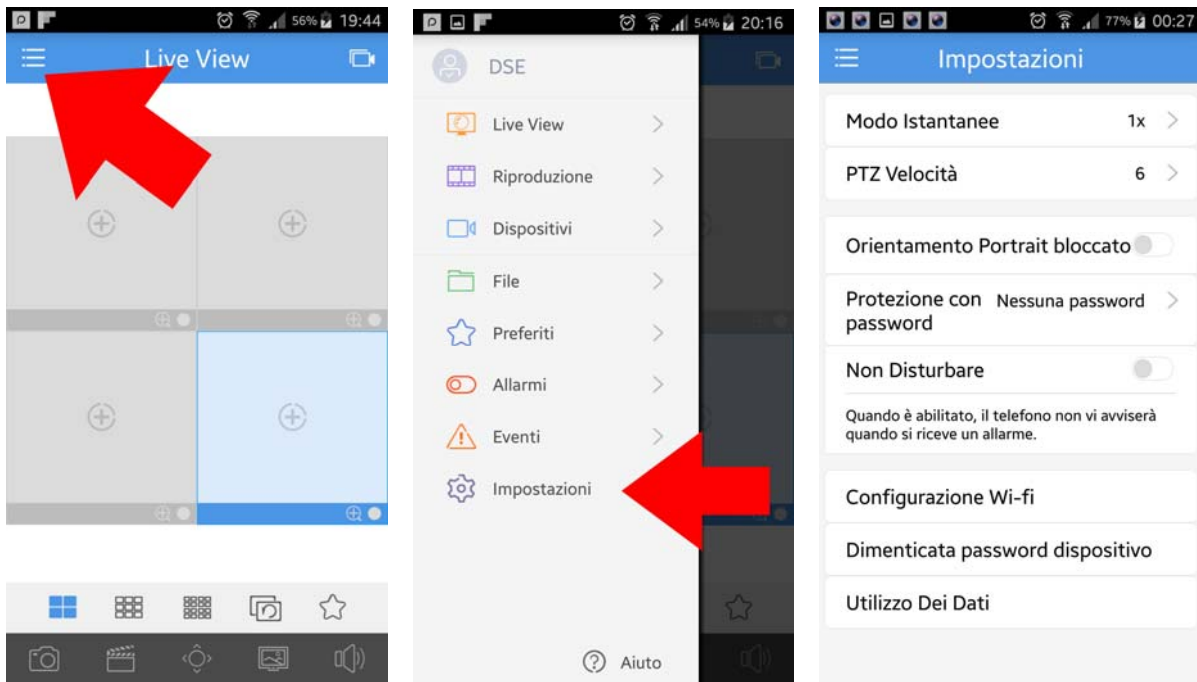
archived files

With the APP you can take pictures and record video live to see them

open the files section



Settings



FLASH MODE - E 'can take pictures in format 1x 3x or 5x

PTZ SPEED ' - and convenient to adjust the speed of the PTZ control by reducing it to have greater precision

ORIENTATION PORTRAIT BLOCKED - E 'can lock the change of automatic layout to the screen rotation

PROTECTION - can make to access the app serve a password to prevent unauthorized access

DO NOT DISTURB - Suspends push notifications of alarms

SETTING WIFI - Network access to wifi, run rule through the device settings.

USE OF DATA - Show a historian of daily and monthly data consumption divided between WiFi and mobile data network.