



USER MANUAL D-Vision XP-RT v. 5.1

DV-XP4

DV-XP8 + TV

DV-RT4 DV-RT8

PCI and D-Vision software for
digital security video recording and
remote surveillance LAN, WAN or
Internet



D-Vision is the most modern solution to all needs of security video recording. Connected to any CCTV system, new or existing, D-Vision will enable the total management of images, the video recording and remote transmission. The PCI card D-Vision is available in versions with 4 video inputs (DV-XP4, DV-RT4) and 8 video inputs (DV-XP8 + TV, DV-RT8); the ability to install

up to 4 cards 4 inputs or 2 cards 8 inputs on a single PC can manage up to 16 independent cameras. In reproduction D-Vision replaces the traditional analog monitor with a digital display, high resolution and much more advanced functions such as viewing

Contemporary of cameras belonging to different remote sites or managing graphical maps. In registration D-Vision totally replace classic video-recorder time-lapse ensuring easier management of

video clips, the absolute indeteriorabilità of the images, and does not require the typical maintenance of cassette recorders. In addition D-Vision makes unnecessary the systems detection of presence the activation of recording as it is alone able to detect an intrusion in the field of view of the camera and activate the recording, as well as local and remote alarms. The use of the latest compression techniques allow

maintain long periods of uninterrupted recording. In telesorveglianza D-Vision allows you to connect to the secure site via the local network or internet allowing you to check the area also surveyed at thousands of kilometers away. The unique compression algorithm provides minimal space used on the hard disk and effective transmission of images to the PC remote.

The application software for Windows 2000 / XP, although an application of high-level professional, is completely in Italian, simple to use and is protected by passwords from unauthorized local and remote system.

Video recorders stand-alone D-Vision embedded

The family of products also includes D-Vision stand-alone video recorders can operate without a PC, but based on the same acquisition engine (D-Vision embedded). It is sometimes preferable solutions to the PC, for example in the case of unmanned sites or users who do not operate with mouse



and keyboard, but they prefer the familiar commands front unit. The stand-alone video recorders D-Vision

embedded I'm fully compatible with the Remote Management Software D-

Vision that is in degree of connect simultaneously with all PCs and D-Vision DVR. In this manual, these devices are called

DVR D-Vision, or stand-alone D-Vision video recorders, or even DV-N video recorders.



USER MANUAL D-Vision XP-RT v. 5.1

GENERAL CHARACTERISTICS

Maximum Support **16 video inputs** made using 4 capture cards of the type **DV-XP4** (16 video inputs and 8 audio inputs)) or 2 cards **DV-XP8 + TV** (16 video and 4 audio inputs), or even 4 cards **DV-RT4** (16 video and 16 audio inputs) or 2 cards **DV-RT8** (16 video and 16 audio inputs). E 'can install XP cards in 4 or 8 inputs on the same PC, as well as RT-sheets 4 and 8 inputs. It can not, however, to co-exist on the same PC XP series cards with cards RT series. algorithm **compression VGZ**, further optimized with respect to the

VGX the format

previous versions, to save space on the hard disk from long recordings while maintaining high resolution and quality images. VGZ is still the only compression algorithm on the market for only being developed for surveillance needs. Compression

Hardware H.264, the last

evolution of digital video compression (DV-RT4 / RT8 only)

High-quality audio recording automatically synchronized and incorporated into VGZ **video files. Playing Real-Time Audio** in local and even in remote connection Display **in real-time of a full camera**

screen or of more cameras

simultaneously (up to 16). Possibility of programming different pagination including in the same screen images from various sites.

overlay Date time and customizable camera name

Hard Disk Recording of all the cameras, activated manually or automatically on the basis of a programmable calendar, or following the detection of an intrusion.

Ability to assign portions of the disc reserved for the recording. If required, the **program provides a overwrite the oldest images once exhausted**

the space

layout. There is no limit to the number of hard disk used and their ability.

High resolution picture (704x576) contrast adjustment, brightness, color tone and independent for each camera.

high acquisition speed with smoother images and impeccable quality.

Motion Detection settable for each camera individually. E 'can set multiple sensitive areas for each camera. settings are available for the prevention of false alarms due to abrupt changes in brightness or the like.

Creating an Alarm local and / or remote in Following an intrusion. Locally you can turn the sound on the PC, or the additional board relay output Inputs / Outputs (if present). Remotely, you can send phone calls with pre-recorded messages or email messages with attached photos or videos

Arm / Disarm Automatic detection of the movement on the basis of a configurable schedule or an external command

password protection for local and remote access with ability to set different users with personalized ratings.

Memory Alarms (intrusion) and user access for quick reference.

Practice management **recorded files with** quick display in the scroll bar and player program freely distributable. Ability to **create photo in printable JPG format or extract a sequence AVI video. Access from remote computer** via the Internet or local area network (LAN) password protected. **What it can do Remote:** display of cameras and listening to the sound in real-time, recording in real time on the remote PC, research and downloading of recorded video in the local PC database, remote control of relay outputs and PTZ control **Speed Dome Camera** of various brands from the serial port of the PC, with programmable presets from the PC.

Additional I / O with inputs and relay outputs that allow you to activate external devices in response to an intrusion or manually locally or remotely. Management of **maps** Customizable where to place the icons of the various cameras. Lack of Alarm **video**



USER MANUAL D-Vision XP-RT v. 5.1

INSTALLATION

D-Vision cards

The software for Windows-D Vision, has been specifically developed to work with D-Vision cards. 2 families are available

D-VisionXP products and D- VisionRT

series cards D-Vision XP:

DV-XP4 - 4 + 2 audio video input - Max. 50 frames / sec. Total. (12.5 per input)

DV-XP8 + TV - 8 video inputs + 2 Audio + 1 TV output - Max. 100 frames / sec. Total (12.5 per input)

series cards D-Vision RT:

DV-RT4 - 4 video inputs + 4 audio - Max. 100 frames / sec. Total (25 per input)

DV-RT8 - 8 video inputs + 8 audio - Max. 200 frames / sec. Total (25 entrance)

E 'can install on a PC up to 16 video inputs. On one PC you can insert more than one card up to comprise more than 16 video channels. It can be used simultaneously tab 4 and 8 inputs, provided the same family (XP or RT).

Package Contents

- PCI Card
- CD-ROM containing the software application D-Vision, the program server (to be used for network connection or via the Internet), the driver for the card and the manual in PDF format.
- Cable Audio cable connectors
- watchdog



Minimum requirements

- IBM compatible PC with Pentium or Celeron processor with the following minimum speeds: 4 cameras min. 1.2 GHz / 8 cameras min. 1.6 GHz / 16 min cameras. 2GHz (Pentium IV)
- min. 256 MB RAM
- AGP graphics card with min interface. 32MB RAM.

Hardware Incompatibility known

D-Vision is not compatible with motherboards using the following chipsets: VIA VT-8233, SIS 630, the SIS 655. It is not recommended to use motherboards based on chipset VIA also other issues related to the long term stability. We recommend ASUS motherboards with Intel Pentium 4 chipset.

D-Vision fits generates any video card, but it is recommended to use cards based on Nvidia chipsets.

Video cards based on S3 chipset are not compatible with some routine D-Vision and is not recommended for use.

Some graphics cards require that the quality of the colors is increased from 32 bits to 16 bits to support the D-Vision software. If you see distorted images, horizontal lines, or nothing at all, close the program and click on the desktop with the right mouse button and selecting properties by changing the last of the display parameters folder.

Operating system

D-Vision can be installed on the operating system Windows 2000 or Windows XP Home or in versions Pro. And 'advisable to update the operating system with the latest service pack when available. D-Vision is not compatible with Windows 98 / Me and Windows2003Server.

D-Vision is compatible with DirectX 8.0 or higher.

Recommended Requirements

- Full Duplex Sound Card (for managing local reports). And 'advisable to format the hard drive with native NTFS file system Windows200 / VP instead of FAT used with Windows98 / ME. This will give more guarantees of stability over time of the system.



USER MANUAL D-Vision XP-RT v. 5.1

Screen Resolution

D-Vision is automatically adapted to your monitor's resolution. For optimal viewing of full-screen program it is nevertheless appropriate to adjust to 1024x768 in

the settings
screen.

Install card

Turn off the PC and disconnect the power Remove the outer wall of the PC Insert the card D-Vision in a free PCI slot Verify that the contact is correct slightly moving the card in its housing.

Reassemble the PC and connect rialimentarlo

the exit video of the camera
entrance of the video card. The connectors of D-Vision card are the BNC type. If you are using an already ready with RCA cable terminals will be required an RCA / BNC adapter (not supplied) for each input.

Along with the card comes a cable for audio that must be inserted in place of the side connector

4 BNC video.

in the cards XP series this cable

ends with 2
connectors RCA (white and
red). Connect the audio output of
camera, self
available, in one of the two audio inputs that are
synchronized with the cameras 1 (red terminal) and 2
(white terminal). In addition you can also use the
LINE IN input on your sound card as a third channel
to be used



another camera tabs RT series,

with
in

can handle 4 audio channels

per card, the cable ends with 4 RCA terminals RED (audio tel. 1), WHITE (audio tel. 2),
BLACK (audio tel. 3) and YELLOW (audio tel. 4)

The card also comes with a cable for the Watchdog which can be connected between
the bridge to two RESET positions of the card and the reset of the PC connector; the one to
which is connected the front reset button.

The watchdog function is not needed for
operation of the board, for which you can
not safely connect the cable; But connect it will restart the PC in case of malfunction

of the software D-Vision.

If the PC is inserted more D-Vision cards simply connect the watchdog of any of them.

To qualify for the watchdog function is also necessary to enable its functionality in the
software (see below). Consider that the watchdog function of D-

Vision is able to detect errors made by the D-Vision card, not from other PC components.

The DV-XP8 + TV card is equipped with a TV output to which one can connect an
external analog monitor or a TV. The yellow RCA connector. The RCA cable is not provided.

The hardware installation is complete. You can repeat these steps for any additional cards to
be inserted in the PC. Finally you can close the PC and restart Windows

Driver Installation

- Turn on your PC
- Windows will recognize the presence of a new hardware and ask its driver
- Insert the CD into the player
- Set the search for the driver CD-ROM drive (usually D: \ or E: \), and the folder containing the driver.
- Follow the instructions to complete the installation. The driver installation is complete.

Installing the application software

- Do not install the application software before you have properly installed the card and its drivers as described above.
- Insert the CD-ROM into the CD If you have enabled the dell'autorun running the CD, a
window will appear that will guide you in the installation and will allow the on-line
registration of D-Vision. If you insert the CD does not happen anything, launch Windows
Explorer.
- View the contents of the CD Double click on *SETUP.EXE*.

Follow the instructions for installation The complete installation also contains a viewer
D-Vision movies (D-Vision Player) and D-Vision Server it is essential to connect remotely via
LAN or Internet.

- After installing the icons appear
D-Vision D-Vision Server among the programs of the start and the desktop menu.

Installation errors in

VIDEO RESOLUTION - COLORS

It's possible that the installation of the program is not allowed if your monitor settings are not
adequate to D-Vision. If you encounter a message like this, head into the settings



USER MANUAL D-Vision XP-RT v. 5.1

screens and set the color quality to 32BIT and 1024 x 768 resolution.

ERROR DLL relocated

Microsoft released On 3/4/2007 a Critical Update for Windows XP (ref. KB925902) that contains an installation error can corrupt the HHTCTRL.OCX DLL used by our software

DSE D-VisionXP is D-VisionRT.
If your PC has enabled the automatic update option, the update KB925902, classified as critical update, you install alone with automatic restart of the machine.

The next time D-Vision will show the following error message:

"D-VisionXP (or RT) .exe - DLL Relocation invalid system. The system DLL user32.dll was relocated in memory. The application will not be

performed correctly. There DLL
C: \ WINDOWS \ system32 \ HHCTRL.OCX was relocated as occupied an address range reserved for Windows system DLLs a. Contact the vendor supplying the DLL for a new DLL. "

Reinstalling the application does not solve the problem. To restore the DLL must install the appropriate patches made available by Microsoft to page: <http://support.microsoft.com/kb/935448/en-us/> .

Congratulations, you have completed the installation of D-Vision system.

Uninstall D-Vision

If you need to remove the D-Vision
PC you can program **ADD / REMOVE APPLICATIONS** accessible from the Windows Control Panel.

Uninstalling does not delete the recordings nor the password you set. To do that you have to manually remove the program installation folder using Windows Explorer.

Update D-Vision

If you need to update it with a new version of D-Vision proceed to uninstalling program

Previous before installing the new one. Remember that uninstalling does not remove all of the program's folder, to preserve the previous settings and the database. Delete it manually if you want to really make a full uninstall that ensures proper new installation .. If you are installing a D-Vision card into a PC where it was already installed a previous generation card is likely that Windows does not request a new driver at startup but try to use that

previously installed. then you will need to travel to the *DEVICE MANAGEMENT* and click

UPDATE DRIVER.

Uninstall the D-Vision card driver

To upgrade the card's driver with a newer simply activate the command *Update Driver in Device Manager* . In some cases it may be necessary, however, completely uninstall the previously installed driver, for example if you have a newer version installed error, but designed for a different type of card. These are for example instructions for Windows 2000 / XP. Delete the driver in Device Manager, then look for the INF folder that is normally found in the Windows folder. Find and delete the OEM files containing the acronym DVuard. Then OEM.PNF also delete its files. Select the folder System32 \ Drivers DVuard.sys delete the file. Now remove the card and restart your PC

The capture rate

In acquiring digital video, a very important parameter is the amount of frames per second can be acquired. The PAL standard requires 25 f / sec, and this frame rate is commonly defined REAL TIME. Digital In the acquisition is also possible to acquire less than real time while retaining outstanding image fluidity. Going down, however, under the 6/7 f / sec the picture is jerky and jerky. D-Vision offers 2 types of solution corresponding to different types of use.

XP SERIES (DV-XP4 and DV-XP8 + TV). The maximum acquisition capacity is 12.5 frames per camera. It is a less than real time acquisition, but that ensures fluid image without increasing the load of PC

work excessive. The recorded files are smaller recording at 25 f / sec to the benefit of the maximum recording capacity and remote video transmission. The D-Vision XP Series cards are also able to optimize the capture rate based on the number of active cameras. For this reason, by connecting only 1 camera every 2 inputs is obtained by the Real Time (25 f / sec). Similarly, by scheduling the recording only in case of

intrusion (Motion Detection), depending on the cameras will use if / sec unused give her camera rest.
The serious D-Vision XP is now the best price / performance in the industry, ensuring high performance at a reasonable cost.

SERIES RT (DV-RT4 and DV-RT8). The maximum acquisition capacity is 25 frames per camera, for which it is guaranteed the Real-Time recording in any condition of use. To achieve this



USER MANUAL D-Vision XP-RT v. 5.1

results, without unduly straining the PC's CPU and video files while maintaining the compact size, these cards use a compression chip Hardware Texas last generation that uses H.264 compression,

the latest evolution of
digital compression.

The compression technique

In the video recording of long-lasting quality and compression efficiency play a fundamental role. The D-Vision XP cards use the algorithm **compression VGZ**, VGX further optimized with respect to the format of the previous version 5.0, to reduce the space occupied on the hard disk from long-term recordings while maintaining high resolution and quality images. VGZ is still the only compression algorithm on the market for only being developed for surveillance needs.

The D-Vision RT cards use the same format of acquisition, but add the compression hardware H.264, the ultimate goal of MPEG4 compression, to maintain the size of the files similar to XP series despite the increased number of data acquisition.

The 5.1 version of D-Vision

This manual refers to version 5.1 of D-Vision that for more advanced network management is not compatible with earlier versions of D-Vision 3.xx.



USER MANUAL D-Vision XP-RT v. 5.1

THE FUNCTIONALITY 'BASE

introductory note

The illustrations below are for the D-Vision XP software, but also applies to D-Vision RT although the graphics may be slightly different.

Start the program

- Click **START - PROGRAMS - D-Vision - D-Vision**
- When you first start the program will ask you to create a master code that will be in charge of the system.
- Enter 3 in the fields proposed the name, and 2 times the password you want to use
- Premuratevi to remember your password and set username. Remember that the data is CASE SENSITIVE, ie they consider several uppercase and lowercase letters. If in the future you forget your password will be no other solution than to **uninstall the program and delete the folder manually** in which it was installed.
- The program will eventually run. From this point on D-Vision will always ask for a password at startup.

Upon restart, D-Vision will start by showing you only the camera monitor. To get access to the controls you need **press ESC** and you will be prompted for a password for access.

The design window

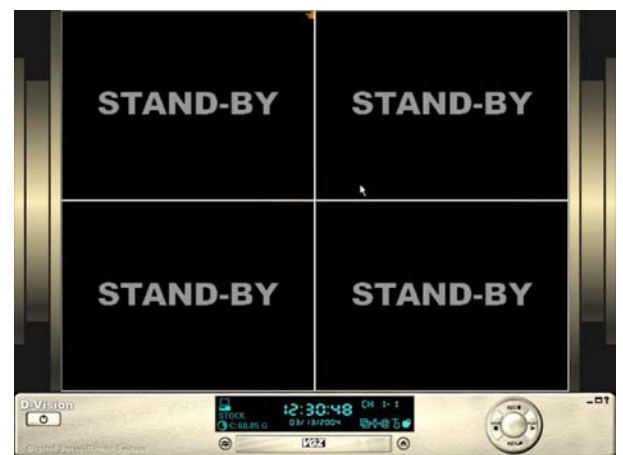
We start by saying that if you start the program you were to look a picture like this:



something did not work properly and the software is not recognizing any card installed in the PC. You will then verify that the card and drivers are

correct is compatible with D-Vision.

The correct screen should instead already present in the split screen 4,8,12 or 16 shares based on the number of cards installed in the PC. Here is the correct initial screen of a 4 camera system (DV-XP4 card) that from now on we will use as an example.



The working area of D-Vision is composed of:

- **image area** (Monitor). Where are display Cameras. This section will appear divided into sections 4,8,12 or 16 depending on the type and amount of D-Vision cards inserted in the PC (from 1 to 16 cameras).

- **Control panel** Place in the bottom of the screen and similar to a digital video recorder, this section contains all

controls and settings of D-Vision.

Pressing the button pictured here at the side, it shows a panel of



controls Special similar to a remote control that appears on the right side of the workspace.

- **TV remote.** The TV remote essentially three functions allows: viewing of any other available PC

in dial-up connection, control of the card relay outputs





USER MANUAL D-Vision XP-RT v. 5.1

VG-IO expansion and command of motorized cameras (PTZ). The three functions are selected using the related buttons

on same



TV remote.



After pressing the button on the left opens the drawer system settings

- **settings drawer.** Here it is enclosed

command menu and the D-Vision program settings, as well as all the tools to handle it the best.



■ **Display information.** Place it over the tray settings provides all the information on system status. In the bottom right of the controls for adjusting the image of the cameras are available.



We see now more in detail these five work areas.

The image area (monitor)

After connecting your camera, and press the REC button (see control area) This section will show the images.



D-Vision automatically recognizes the number of cards inserted in the PC and then divides this area into the corresponding number of sections.

Clicking an image is evidence that the camera will be the subject of actions that will follow (eg.

contrast adjustment, PTZ control etc.) and appear a little hand in the upper right corner to remind us.

E' can make a double click on each camera to switch between the display of all the cameras simultaneously to the one which reproduces only one camera in full screen. It re-run a new double click to restore the multivision.

Typically this section reproduces the cameras connected to the local PC, but if collegassimo us to a remote PC via LAN,

interent or modem it

reproduce images of the remote site. The function of

pagination (my channels) that

we'll explain below

even allows you to

mix on the same image area

cameras

from different computers. real or the full screen. The same options can be selected by clicking on the image with the right mouse button.

The control panel


In the bottom of the screen resides checks the area with the main commands necessary to use D- Vision.




The following commands are available:


- **ON / OFF button.** A click on this button allows you to exit the program. This is ONLY granted to SUPERVISOR SYSTEM.

- Written D-Vision. A click on the word displays program information.

-  The minus sign reduces the program to icon in the Windows taskbar. D-Vision will continue to operate normally, but will no longer be visible on the screen.

The symbol of the window switches to full-screen from which you can exit by pressing **ESC**. The button? It is disabled because the program guide is provided on CD in PDF format.

-  This button brings up the remote control for special functions

-  This button activates the panel of settings, as long as the password used to log in so permits.

In the right part of the controls is a group of circular commands.

REC Turn the cameras on-screen. This does not mean that they are necessarily in registration as this will depend on each individual camera settings.





USER MANUAL D-Vision XP-RT v. 5.1

STOP Stop the cameras that go into STAND-BY KEY It allows you to make a LOG

OUT from the program to be able to log back in with another username and password by pressing ESC.

PLAY Open the control panel of the files reproduction through which you can search the video of interest. The function is described below.



Bottom left shows the free disk space in the database on which you are recording.

In the center there is shown the Current date and time In the upper right is shown the camera that has been highlighted on the screen. You find the CH code followed by the card number and the camera. Below shows the message VIDEO if it is being recorded and possibly the written AUDIO if if recording includes the same. If neither appears nor VIDEO AUDIO means that the camera is not recording.

The tray settings

The panel



It allows you to access the following features

LINK It allows access to the control of remote sites it via modem, internet or LAN.

SCAN Start cycle the display full-screen cameras.

SET It allows you to set all program settings

LOG Allows access to the event memories of D-Vision, where I recorded all alarms and local and remote logins

MAP It allows you to select and display graphical maps may be set

MUTE It silences the audible alarms generated by motion detection

In the bottom right there are 5 iconette that allow to control the image control parameters of the selected camera that are described below:



The bottom right section of the information display allows
adjust the image of each individual

camera. Detailed information about these controls are found later in the REGISTRATION section.

Later the individual functions are explained in detail.

Information display

In the center is a screen that shows real-time information about the status of D-Vision. By clicking alternatively on the screen you can hide or show it.



In the upper left is the name of the PC you are currently viewing. The PC icon located above list indicates that this is the local PC, but if you find yourself in connection with a remote PC icon will appear remote connection



USER MANUAL D-Vision XP-RT v. 5.1

The remote control

The remote control is shown and hidden by pressing the button beside.



The remote control unit 3 assumes different configurations depending on which of the buttons is pressed reproduced below:



HOST / MY CHANNELS

The first button on the left allows you to view all networked PCs or cable modem, or even via the Internet. The PC names are those set in your computer's network options. Any PC that present alarmed cameras are distinguished by a red exclamation mark. A double click on one of the connected PC lets you view the cameras, provided that the correct password to access used to access D-Vision, and is recognized by the remote system.

Clicking on the arrows at the bottom of the display you move on **programmed layouts (MY CHANNELS)**. It is customizable layouts that let you play video cameras from different PCs in the order



desired. The layouts are to be set in the OPTIONS program as we will show later.

PTZ

PTZ means PAN / TILT / ZOOM ie in simple words SIDE ROTATION (right-left) / VERTICAL ROTATION (Su-Ju) / ZOOM. There obviously refers to motorized cameras which can be controlled via serial (SPEED-DOME) or via contacts (TILT). When used in a dome camera or with motorized pan, tilt and the appropriate settings are set in the settings of

program, will be possible through this panel to control the camera is resident on the local PC or remote. the most common commands for controlling the motorized lens and camera movement are available.



E 'can also act on the remote PTZ cameras.

OUTPUT

If you bought the card outputs VG-IO you can control the outputs manually and switch between them with a simple click. This remote control screen allows you to select the I / O card and then clicking it to activate the desired output. The left output circle will change from white to black to highlight that the activation was carried out.



E 'can also activate outputs on remote PC.



USER MANUAL D-Vision XP-RT v. 5.1

SYSTEM SETTINGS

To access the D-Vision settings you must click on

button depicted in



the right to open the drawer settings. E 'need to be logged-in to the supervisor code, or with a normal user code that has enabled the access level authorizing the modification of system options. System in the menu on the right of the screen. The settings icons appear, as shown below.



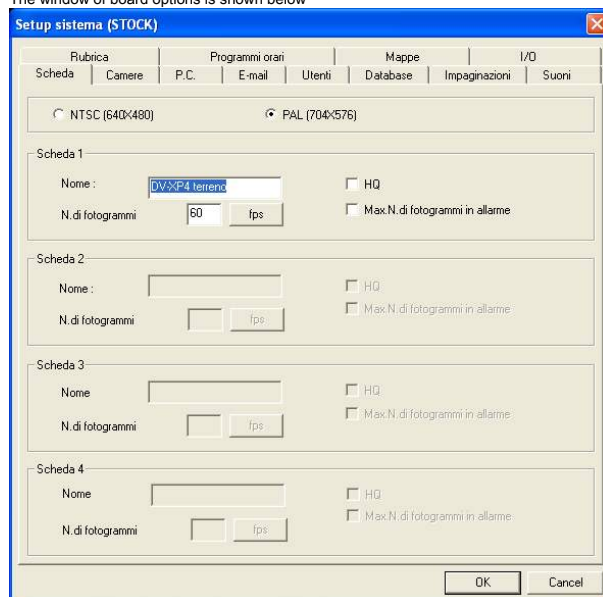
Now press the SET button, the dialog for the set up of the system page.

The window system options is divided into different folders can be selected with a simple click on the corresponding tab at the top.

This section explains what the various settings available in different folders of the options menu. The first folder that appears allows you to program the general options for your capture card.

card Options

The window of board options is shown below



Depending on the number of cards installed in the PC D-Vision enable 1,2,3 or all 4 card sections.

PLEASE NOTE : Why the changes made in this section are properly applied by the system it is necessary that the cameras are in a state of NOT REGISTER (press STOP).

In the top of the board you have to choose the video standard used by the cameras that correspond to a correct resolution of the captured frames. In Europe, the standard used is PAL, so you have to set the PAL option which corresponds to a resolution of 704x576 Pixel acquisition.

In the following sections, for each card in the PC, you can program the following parameters:

First name - Type a name that is representative of 4 cameras connected to the card, such as a name that identifies' monitored area.

Number of frames - Represents the number of frames (frames) captured per second (fps) or by clicking on the button next to it, the seconds per frame (spf). You can safely leave this parameter to the factory set value (25 f / s in PAL), as still-D Vision will adjust this value to the capabilities of your CPU. The value of frames captured is very related to the PC processor speed, choose a faster processor if you want to use all the potential of your card. Consider decreasing this parameter to one or even all tabs if you want to store on the hard disk a very long period of images. It 'obvious fact that if you require to record such system. 3 frames per second, it will occupy much less disk space than the maximum recording speed of acquisition

HQ - High Quality Image. This setting improves the recording quality, but results in increased employment of Hard Disk. The function also requires a significant amount of resources. In D-VisionRT the HQ function cards is always available but there are limitations with D-VisionXP cards using

the CPU computer there compression. The HQ is not available on DV-XP8 + TV card. The DV-XP4 the board allows up to a maximum of 3 cards on a PC, while installing it 4 cards will be available only on two cards.



USER MANUAL D-Vision XP-RT v. 5.1

Max. Number of alarm images

By selecting this option, the card will automatically switch to full frame rate on alarm. If you have a hard disk of limited capacity or want to retain long periods of video, you can set a low capture rate (1.2 f / sec) will increase from one to intrusion detection. If you need to keep on Hard Disk extremely long time you can also record one frame every xx seconds to get a record like that of time-lapse tape recorders. You have to in this case press the pulsed fps (frames per second) to change it in spf (seconds per frame)

disable the M monitor regularly the camera will record the REC button is pressed, however, to place the image on the screen will play a black screen with the word RUN.

Option A (Audio) This option enables synchronized audio recording. And 'possible to enable the cameras 1 and 2 of each card, which correspond to the red and white connector of the audio cable. E 'can also enable audio of the cameras 3 or 4, and in this case will be recorded audio captured from the entrance of the LINE IN PC sound card. As for the inputs 3 and 4 provided a single audio input (that of the sound card

camera Options

By clicking on ROOMS tab activates this window

As always D-Vision enable automatic adjustments of the number of cameras corresponding to the number of cards installed.

You can be programmed for each camera:

Enabling / Disabling the camera

The first option left handle allows you to enable or disable the video input

camera Name Here you can type a meaningful name that distinguishes the camera

Option R (Record) Putting here the checkmark will enable the recording of the camera whose images will be stored as soon as the REC button is pressed

Option M (Monitor) Putting here of the camera check mark is displayed on the screen in real time.

If abilitate R recording and

PC) will not activate

there

Audio recording for both channels

Option V (Alarm Lack Video) If this option is enabled D-Vision will generate an alarm if it were to fail the video signal of this camera due to a failure or tampering. The actions to be performed in case of alarm and its duration should be set by pressing the enabling and pulsate further alarms.

PTZ control. If the camera in question and pivoting, or is a speed-dome camera can be set through which device you want to control the movement.

image Options Opens an image control panel of the selected camera

The cursor image quality at the top allows programming

the quality of movie acting

directly on the algorithm of VGZ compression. Logically, a higher image quality corresponds to a lower compression ratio, resulting in a larger footprint on the hard disk. It 'a good idea to use the medium setting default proposal

The detection section of the Movement Options

sets for each camera the sensitivity of this feature. The cursor sensitivity it makes the detection of the more sensitive or more delayed movement. In the set it is good to take into account that a sensitivity



USER MANUAL D-Vision XP-RT v. 5.1

high is more exposed to false alarms and can only be applied to cameras that generate a very stable video signal and where you do not foresee image variations due to changes in **brightness or otherwise. The number of modified images avoids false alarms due to sudden** changes of ambient brightness. For example, setting 3 images it is required that 3 consecutive frames undergo variations to generate the alarm (for example the ignition of a light only modifies 2 consecutive frames)

Alarms Option This enabling allows the generation of alarms to the camera in case of

motion detection or video loss. The Options button accesses the program alarm actions that will be described later in the REGISTRATION section.

PC Options

Clicking PC you access the general settings of the workstation.

SECTION OPTIONS AUTOMATIC

When the computer starts the program

It should be checked if you want D-Vision to be automatically performed every time the computer

When the program starts recording

This option starts recording when you start D- Vision.

When the program starts connect to the server

When the D-Vision program link automatically to the D-Vision Server program to enable remote access via LAN or internet.

PLEASE NOTE : If you use the watchdog function that allows to reset the PC in the case of the system block

operating, or the soft-periodic reset described later, it is advisable to enable all 3 automatic functions just described to allow D- Vision to return alone in working condition after reset. You 'also need to disable the password prompt when you start Windows.

At the closing of the shut down / restart the program PC automatically

Shut down or restart the PC automatically when closed D-Vision.

Reboot your PC regularly

Enabling this option has the ability to program a periodic restart the PC to prevent a shutdown

Windows may unexpectedly compromising recording for long periods. Click on the Options button you can choose the frequency, the date and time of restart.

SECTION SOUNDS OF NOTICE

PC Lost

Generate a warning sound to be chosen with the SELECT SOUND button if any of the PCs connected via LAN or Internet disconnects and becomes no longer reachable.

LOG IN Local Error

Generate a warning sound to be chosen with the SELECT SOUND button if it detects an incorrect password when you sign in to D-Vision on the local PC

Error LOG IN remotely

Generate a warning sound to be chosen with the SELECT SOUND button if it detects an incorrect password when you sign in to D-Vision from a remote PC

SECTION OPTIONS TV OUTPUT

This section covers the possible functionalities to match the TV output of the DV-XP8 + TV card. The section is not fit for use with other types of card.

Cyclic By selecting this option, the TV DV-XP8 + TV card output will show the 8 video inputs one by one full screen in sequence. The cyclic scan has a residence time of 3-4 seconds of each camera, not editable.

Quad By selecting this option, the TV DV-XP8 + TV card output will show a quadrivisione of the cameras 1 and 4 ... 1.8 Cycles. The polling has a residence time of each image quad 3-4 seconds, not editable.

8 Channels By selecting this option, the TV output of the DV-XP8 + TV card will show all 8 cameras on the screen simultaneously.

SECTION MISCELLANEOUS OPTIONS

Local LAN port - And 'the listening port of the D-Vision software used for remote sessions. Default is 40001 and as a rule should not be changed.



USER MANUAL D-Vision XP-RT v. 5.1

Local WAN port - It too has default

40001. It should be changed only if the PC with D-Vision cards in a same LAN must be able to be accessed from an external PC through a router. See below instructions for remote connection.

Duration of video files - D-Vision stores

recordings in file individual the duration programmable. You can set here the duration of each individual file (minimum 10 minutes, maximum 60 minutes).

cyclical scan time - The D-Vision monitor

typically shows all the cameras together and allows you to go to one or the other simply by clicking on them. Pressing the SCAN key on the front panel of the system options instead of the cameras will be displayed in full screen in sequence, as would a switcher. In this window you program the dwell time of each camera during the scan. Once the cycle you can stop it by pressing the SCAN button again.

Automatic Log-out after XX minutes - If D-

Vision will not log any operation for the set time, will automatically perform an operator logout. If you do not want to use the automatic log-out just allow time to zero.

Automatic access alarmed DVR -

Enabling this function in case a VCR stand-alone D-Vision embedded (DV-N) Series goes into alarm is possible to perform automatic remote connection. E 'need to enter a user name and password correctly present in the DVR configuration.

Live Audio The cameras that are associated with a microphone audio input may allow

playback of audio in real time along with the files if you enable this function. Selecting the camera with a click you will hear the sound being recorded through the PC speakers The function is only valid for the associated cameras to

mic inputs of the board and not to the audio input of your sound card.

Water mark If you enable this option in the upper right corner of each image you will

be given a D-Vision logo for transparency in order to make images

easily alterable. The function is

available only in the software version D-VisionXP and not in D-version VisionRT

Shortcut keys for system crash If you enable this option

It prevents the use of some

combinations of Windows key as "ALT + TAB" "ALT + ESC" and "CTRL + ESC" that allow you to move to other windows applications, and is prevented minimizing windows. This is useful if you want to leave D-Vision full screen and prevent other staff to minimize it and use other Windows applications.

View default text Enabling this option will display the default descriptive legend in all

windows / open cameras from D-Vision.

Show status encoding Enabling this option will bring up an additional window on the

D-Vision control panel that will show the number of frames per second D-Vision is acquiring. The detection is performed in a precise moment and not in real time during recording, for this reason must be understood as an indication.

Path photos and videos - If you enable this

D-Vision function will ask you which folder to use whenever you decide to save a picture or video. Leaving this option disabled the files will be automatically saved in the default folders in the D-Vision database.

Pop Up Alarm in alarm log - For each alarm activation will show the alarm memory to

facilitate a prompt operator response.

Enlarge alarm in room - If enabled

this option, each alarmed camera will be brought automatically to full screen

Web camera - Enabling this option

It allows access to D-Vision via Internet Explorer

cyclic layouts E 'can set the dwell time if you turn on polling mode while viewing the

layout (see below).

Presentation at the start - By activating this function

on startup of the program

it will come

automatically shows the first layout in the list (see below).

E-mail Options

D-Vision lets you send email messages with attached images and video clips on alarm. It is a very useful feature as it allows you to send images to another location, putting them at even protected from subsequent destruction attempts by intruders.

The screenshot shows the 'Setup sistema (SERVER)' window with the 'Opzioni E-mail' tab selected. The window has a tabbed interface with tabs for Rubrica, Programmi orari, Mappe, I/O, Scheda, Camere, P.C., E-mail, Utenti, Database, Impaginazioni, and Suoni. The 'Opzioni E-mail' section contains the following fields and options:

- Mail server: smtp.fastwebnet.it
- E-mail da: assistenza@dseitalia.it
- E-mail a: sorveglianza@inpol.it
- Tentativi di inoltro: 3
- Intervallo fra tentativi: 60 sec
- Autorizzazione server posta: ☐ Autorizzazione
- Utente: [empty field]
- Password: [empty field]

Below the email options is a section for 'Telecamere' with a grid of checkboxes for 44 cameras (Camera1 to Camera44). Each camera has a 'V' (Video) and 'P' (Photo) checkbox. At the bottom, there is a checkbox for 'Alarmi da ingressi'.



USER MANUAL D-Vision XP-RT v. 5.1

Mail servers Enter the address of the SMTP mail server of your provider
you use Internet

usually for sending emails

Email from Enter e-mail address as the sender you want to be visible to the person
who will receive the alert email. This field can not be left blank

E-mail to Enter the email address you want to send the alarm notification email

Attempts forwarding and interval between attempts If for various reasons, such as
unavailability of the server, it proves impossible to send an email, D-Vision will retry for the
number of times you booking, after a time interval that will set the box.

Mail Server Authorization It is generally not required password for sending emails
(which is instead necessary for access to the mailbox) and this section can be left disabled. If
your provider's server requires a user name and password for sending messages you have
to enable this function and type in the appropriate username and password correct spaces.

Section cameras Here you can determine which cameras are enabled to send emails
and what the content of the email sent.

PLEASE NOTE : Only the cameras for which you have enabled the alarm management (see
OPTIONS CAMERA) will be selectable.

After enabling sending email in case of alarm you can choose what to send: V = P = Video
Photo

ENTER YOUR MOVIE VIA EMAIL

If you enable the email to the camera alongside V box sent on alarm will contain the movie
the set alarm time. If the recording is continuously set it is also sent an early warning period.

ENTER THE PHOTOS VIA EMAIL

If you enable P box next to the camera the email sent on alarm will also feature images
taken later to the alarm. And 'necessary that in the alarm actions set for the way the camera
is performing a number of photos.

from inputs Alarms Enabling this function will verify the email notification in the event
of alarms generated after the activation of an input of VGIO card.

Users

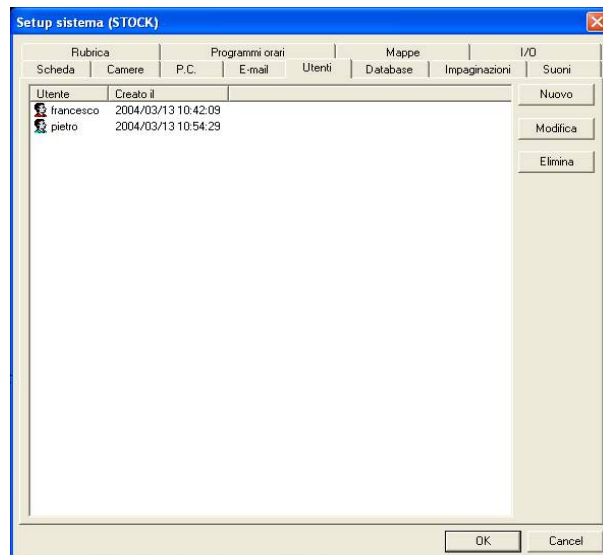
Clicking the USERS folder opens into a window that allows us

set user names and

password

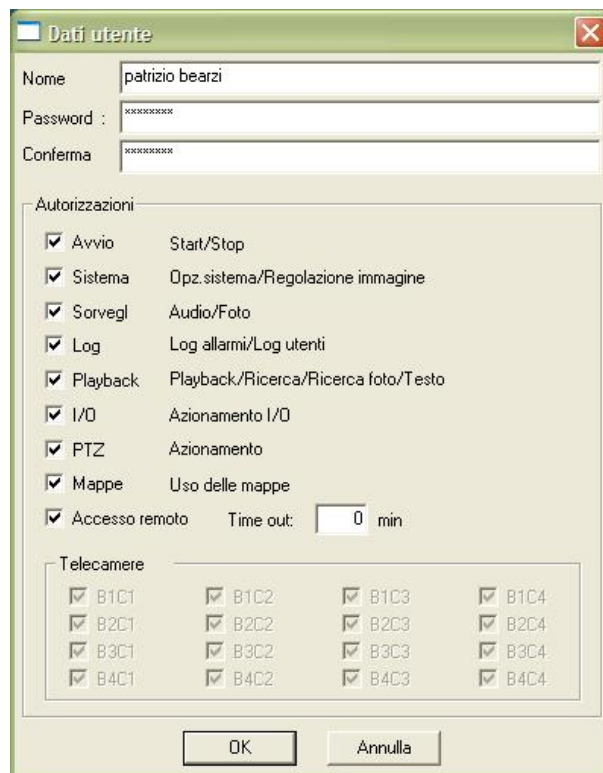
all users of D-Vision. IS'

necessary to include in this list all users who have to use the D-Vision local and also all
those who should be able to access it remotely.



The window lists all users already programmed. Since the first start, D-Vision also prompted
you to enter a name and password for the supervisor, you will find the corresponding red
icon with the name you have chosen.

NOTE: Only if you have had access to D-Vision with the Supervisor code can create and edit
users. If you want to create a new user must click NEW and the following window appears:





USER MANUAL D-Vision XP-RT v. 5.1

In this window you enter the name of the new user and 2 times the chosen password (Password and Confirm). Then you have to give the new user permission or not to perform all of D-Vision functions.

PERMITS The section consists of various items that you can tick or leave blank. The checkmark means that the user has access to the function, raising the selection the user can not access the functions described side.

Start - Ability to start and stop recording (REC-STOP button)

System - Access to settings and D-Vision
the image adjustment of the cameras

Surveillance - Access to the audio muting
and the execution of photos

Log - Access to alarms and access memories
users

Playback - Access to search and
Playback of video files and photos. Access to the saddles overlay images settings

I - Access control of add-on cards
Inputs / Outputs

PTZ - Access to the PTZ camera control
controlled with this system (if present)

Map - Access to graphic maps

remote access - Ability to access the
system from a remote PC via the Internet or LAN. With this option was eliminated the
difference between local and remote users used by earlier versions of D-Vision and
each user has a unique name and password to be used both locally and remotely.

Time out - If the user's remote access
can set a time-out period after which D-Vision will stop sending your video while keeping up
the connection. Leave to 0 to not use the time out.

Selection cameras - Access a
displaying a specific number of cameras. The non-enabled cameras will not be displayed to
the user.

Delete and modify a user
Highlight the user with a single click, then press the DELETE or EDIT button

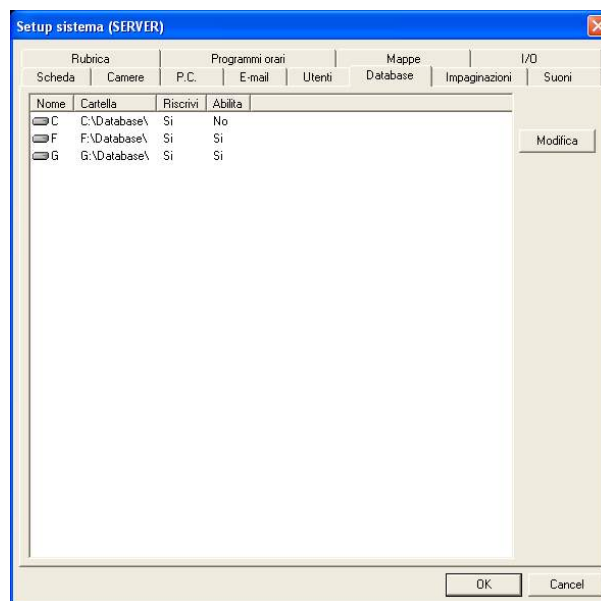
Memory user access
D-Vision will record the date and time of each local or remote user access, and records them
in a memory accesses. You can access it with the LOG button placed in the tray settings.

Database Options

D-Vision can record videos on Hard Disk without interruption. Although use
a special

compression algorithm made just for this, it is obvious that occupy large disk space. However
appropriate adjustments to even use Hard Disk small capacity available.

Click the DATABASE folder to open the settings window.



D-Vision automatically detects startup all hard disk and / or partitions in the system and
creates you a name DATABASE folder, where settle the record files. **The database created
on C is the basic set as disabled** as it is expected that C is installed on the operating
system. You can not change the location of the database, but you can disable the database
you want to not use. To change the properties of a database must highlight it and click **MODIFICATION**



No HD recording space is the dimensions of free space on the disk to allow the
smooth operation of Windows. D-Vision will record all the free space and stop leaving free
the space that you'll set before the whole 'Hard



USER MANUAL D-Vision XP-RT v. 5.1

Disk is busy and Windows risks of crashing. The free space recommended default is 1000 MB, but you should set it to a value of about 5% of hard disk drive capacity.

Skills - D-Vision will use the database only if enabled. And 'necessary to enable at least one database to record.

Rewrite D-Vision Selecting this option will not stop recording the exhaustion of the available space, it will start deleting older overwriting them with new files.

NOTE: If your PC has only one hard drive is necessary abilitare recording on the database in C.
otherwise you can not record.

Alarm insufficient space It is an option to use if you do not want
overwrite

Hard Disk and that allows you to play a sound when all the available space. The next button opens the library of sounds.

NOTE: By setting in the PC Hard Disk resources mapped network you can make sure that the registration takes place on another PC.

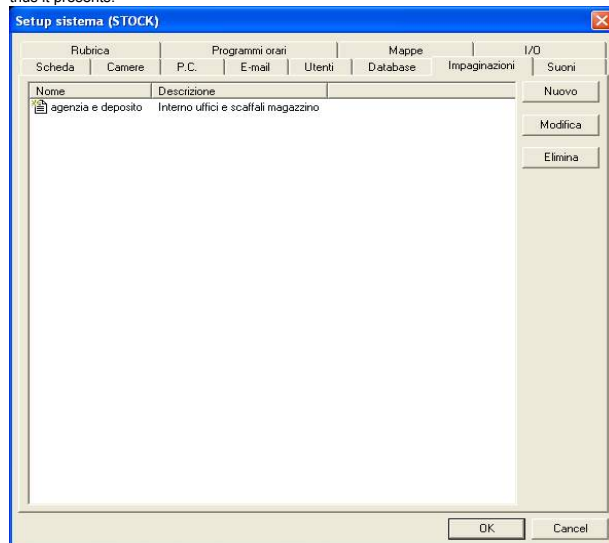
layouts

This is a new feature in D-Vision called MY CHANNELS screen that displays up to 16 cameras also from different remote PCs. And 'possible to program different layouts easily recalled that allow you to manage a large number of remote sites.

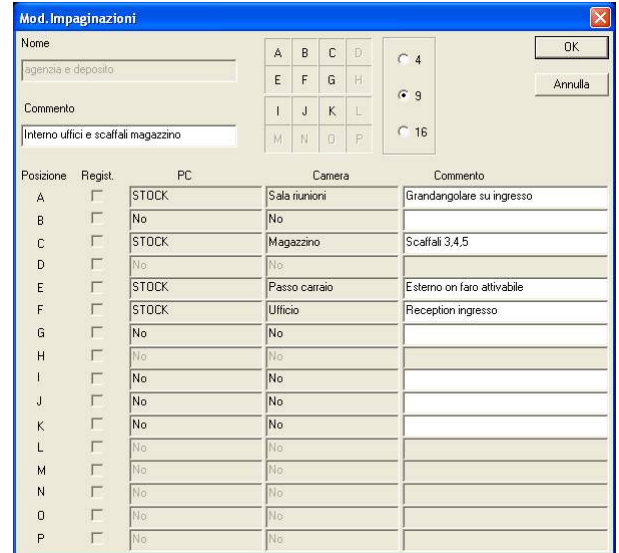
To recall different preset layouts is sufficient to act on the remote control as previously described. The page

setting of layouts you

thus it presents:



of course the first time this list will be empty. We can add the first page layout by clicking NEW:



In this window you can first give a name to this page layout as well as an additional description. Then you can choose whether to display a screen 4,9 or 16 cameras, this will enable in the grid below a corresponding number of programmable cameras.

At this point it is possible for each position of the screen to choose which PC and which camera display. The description field allows you to add an indicative comment.

The RECORD option is only active if the chosen room is on a remote PC and enables recording in local video during playback. NOTE

WELL: During there programming PCs
pagination is necessary for all
interested they are connected and that owns
authorization needed to access it.
subsequently Sara possible use
the layout even if one or more PCs affected are uneven, but obviously not connected cameras will be inactive.

Sounds

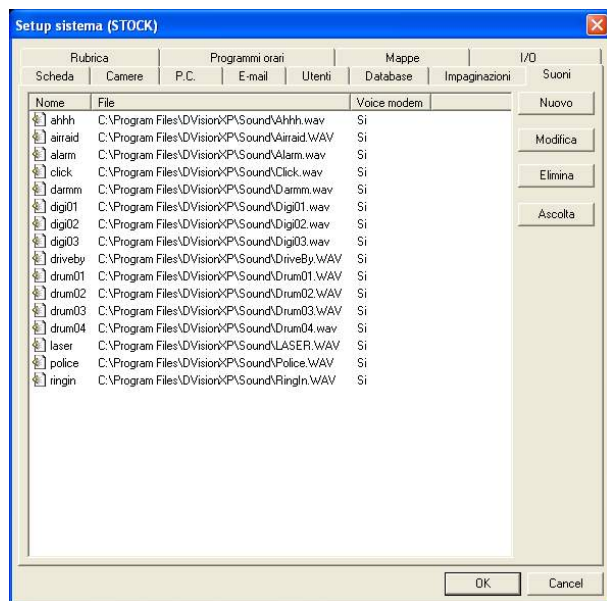
Clicking the SOUNDS folder to access the library sounds, and you can edit it. In the library sounds you can enter all the sounds you'll use in D-Vision. For each camera, D-Vision allows you to play appropriate sounds (eg. "Intrusion alarm warehouse 1"), or to send phone messages (eg. "Shop Alarm Input Via Roma"). E' can record your own messages using any recording program, such as Windows Recorder, to be able to generate WAV files. You can insert files recorded in the D-Vision SOUND mail folder inside the installation folder and you will find them available for use within the program.



USER MANUAL D-Vision XP-RT v. 5.1

D-Vision provides you with a small library of prepackaged sounds.

Each sound consists of a name and an associated file. Clicking **NEW** you can set the name of your sound and choose it by searching your hard drive.



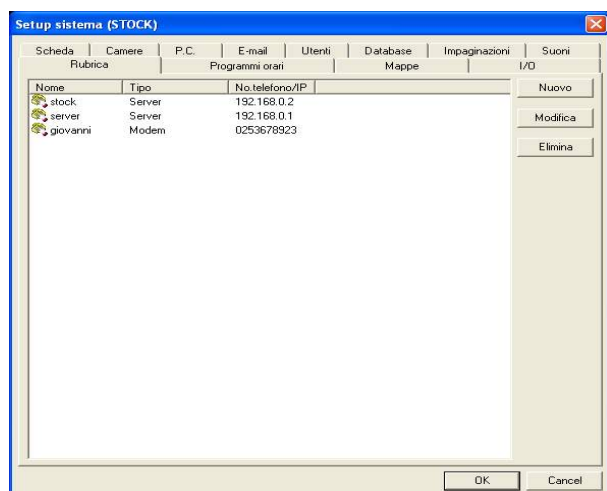
You can delete existing sounds or insert new ones. Clicking **Listen** you'll hear the selected sound.

Address Book

As we shall see below, D-Vision allows remote PC access via local LAN or the Internet.

The 5.1 version of D-Vision, unlike the previous ones, does not allow telephone calls with analog modem

The phonebook allows you to store the IP addresses of the remote site you want to access, so that should not be entered each time. Click **HEADING** folder



NEW By clicking you can insert three types of remote sites:

Server - This is the server (D-Vision Server program) to connect to and then have access to multiple PCs connected to it via LAN or Internet. They go inserted the name and IP address. It 'also shows the communication port 40000 that you should not change. NOTE: Use with DDNS.

If the PC of residence of the D-Vision Server program does not have a fixed IP address you can use a DDNS service that makes a dynamic IP approximately fixed. In this case the setting to be performed is as follows:



Where the rule of the DDNS service that you signed is part of the address name, and the IP address and port are not changed.

DVR PC - You can enter the address of another PC equipped with D-Vision cards. They go inserted the name and IP address. IS'

also reported the door of 40001 communication used by default by D-Vision software, and that you should not change.

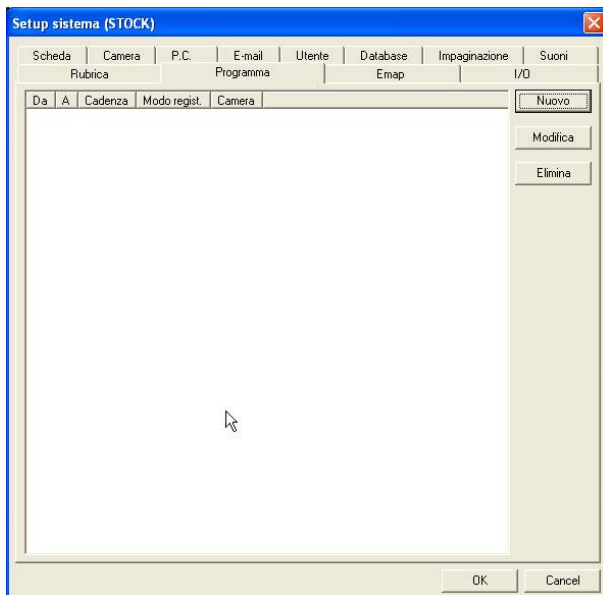
DVR - Yes can he to insert address a VCR D-Vision embedded DV-N Series. They go inserted the name and IP address. It 'also shows the communication port 50000 is used by default by D-Vision DVR embedded and that you should not change.

time program

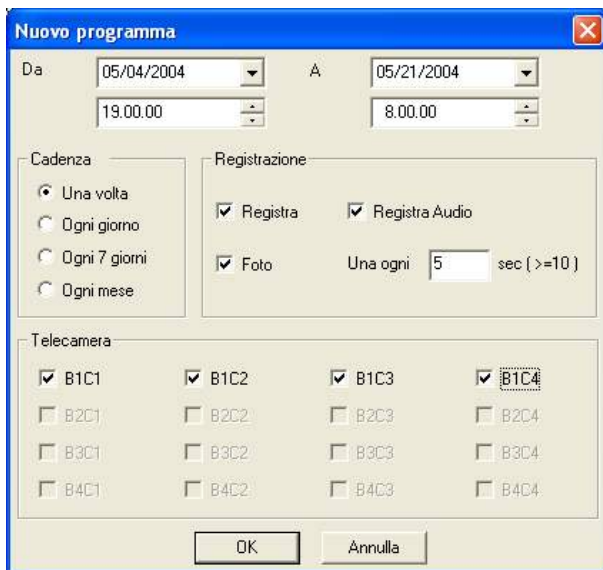
D-Vision allows you to start recording and / or take pictures automatically on the basis of a time programmer customizable calendar. Select the Programs folder



USER MANUAL D-Vision XP-RT v. 5.1



NEW Click now to enter at your first automatic programming.



From to In this section set the beginning and the end of the automated registration period, inputting the date and time.

cadence Choose a daily, weekly or monthly. You can also choose a program that is performed sporadically once.

registration Set here the type of recording you want to perform. RECORD enable recording the video for the whole set, the AUDIO RECORD will associate the sound recording, PHOTO will match the production of static frames and

in the next window you can choose the distance of time between shots and the other

Cameras Here you can select which cameras will be covered by the registration during automatic operation.

NOTE: If the time slot passes midnight is recommended

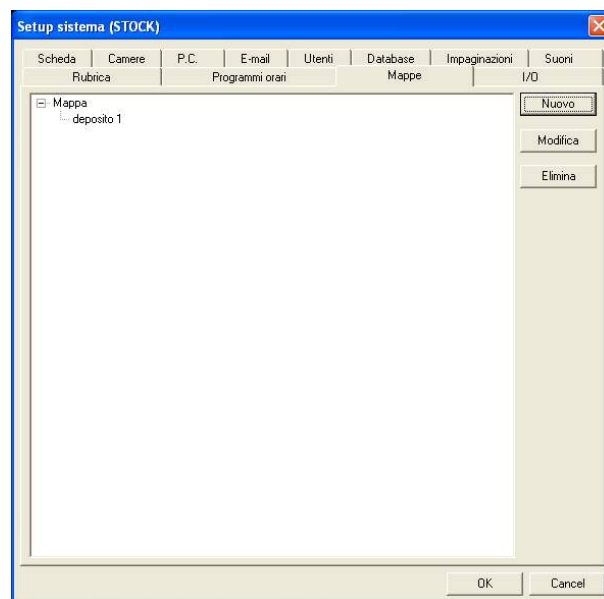
set 2 programs

hourly

separated: one until midnight and the second since midnight.

Map

D-Vision allows you to import one or more maps of the protected site and view over impression in the arrangement of the cameras. The icons of the cameras will change appearance depending on the state of the same (at rest, in recording, alarm), and you can click on them to quickly display the image. To access programming Click MAPS:



Pressing **New** you can create your first map giving it a name and choosing a BMP file you want.

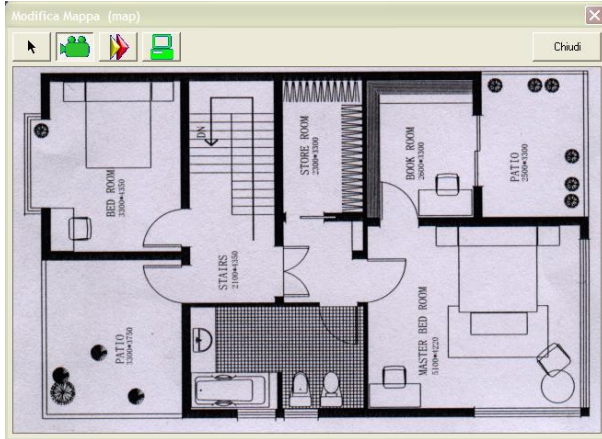
For example, you go to the scanner a map, or create it with a graphics program such as Corel Draw or similar. Then save the image in BMP format in the folder EMap D-Vision. And **it recommended save maps with 640x480 resolution, as different resolutions would be extended or reduced resulting in a loss of quality.**

You can create multiple maps depending on the extent of the protected site.

Double clicking on the description of the newly created map you can open it:



USER MANUAL D-Vision XP-RT v. 5.1



Now you can add the cameras clicking the green camera icon at the top and then clicking again on the map where you want to place it.

A properties window will ask you to which PC, camera card and you want to tie the new icon.



After entering the information and confirmed you can now move the icon of the camera at will by dragging it with the mouse after clicking the arrow button at the top.

Double-clicking on the camera you can edit its properties. The button



It allows you to insert a link with another map already programmed, so that clicking on it will be transported to another environment. It can be, for example,

Interesting

use it at the beginning of the scales that may lead to a higher plane to forward the user with a simple click in the new environment.

E' can also insert a link with another PC-DVR using the button



The use of MAPS will be explained in detail later in the registration section.

cards I / O Options

In this folder you can enter the relay inputs and outputs devices (VG-IO) and any speed dome cameras that D-Vision will control. Please refer to the relevant section you will find below.



USER MANUAL D-Vision XP-RT v. 5.1

THE REGISTRATION

After viewing the available settings in the previous section we move on to see how you use D-Vision.

To activate the cameras and start recording just press the REC button



The compression algorithm

D-Vision is the only digital recording system for PC to use a compression algorithm specifically developed for

surveillance,

called VGZ. Unlike other compression systems it is specifically developed for long-term records where an image can also remain unchanged for a long time. Being fixed CCTV cameras, this situation is proposed whenever the environment is not an intrusion.

The compression algorithm is able to take up very little space in the recording still scenes, to let available in the intrusion recording. For this reason, the D-Vision files have a variable size although always contain a predetermined recording time: depends on how much motion has occurred.

Start recording of all cameras

At the start of D-Vision does not show an image on the screen and all the cameras show the written STAND-BY. And 'necessary to start

there

recording. Start recording does not mean forcibly recorded on the hard disk because each camera can be set to record or show only images.

To start recording all cameras



at the same time that's enough press the REC button of the disc commands. Click the button STOP for the registrations pending. In recording the cameras show

the image

shooting, or you will see a

NO VIDEO signal if there is no input video signal. It's also possible that the camera shows the indication RUNNING if you are recording but not enabled the display setting (see camera settings).

scheduled Recording

D-Vision allows you to start and stop recording

on basis of a calendar

customizable. The function has been described in the section SYSTEM SETTINGS.

Camera Status Icons

In the corners of the pictures reproduced by D-Vision may appear icons that indicate the status of the camera. They are the following:



The little hand icon at the top right indicates that the camera is selected (click on the image) and will be the subject of subsequent actions such as adjusting image, or PTZ control.



The P icon in the lower right corner indicates that the camera is object of REGISTRATION

SCHEDULED



The icon with the exclamation point appears at the bottom right when the camera has generated an alarm.



The icon in the lower right film indicates that the camera is being recorded



The speaker icon that is available of the 'AUDIO playback in real-time.

camera controls and execution of real-time photos

The section at the bottom right of the display information is used to adjust

the image of

every





USER MANUAL D-Vision XP-RT v. 5.1

single camera.

One must first select the camera to be adjusted by clicking on it and verifying that it appears a little hand indicator in the upper right. Then you can act on the controls listed below from left to right:

Discard masks It allows you to delete the selected camera all intrusion detection masks set. The masks, namely the sensitive areas within which

the movement of a intruder will generate an alarm, they are easily obtained by clicking on an image and dragging the mouse to complete the rectangle will remain indicated the image itself.

Photo Clicking this button will take a real-time picture that will be saved in JPG format database. Of course, the picture will cover the camera at that time had been selected.

Text Activate the overlay image information of the selected camera. They are shown: the start time of the recording, current time, the card and the camera name name

text Color It allows you to choose the color of the overlay so that ridges adequately according to the background.

video Configuration From access

control of parameters of image optimization camera selected. The window shows to side, It allows to adjust Brightness, Contrast, Saturation and Color Tone.

The button

DEFAULT restores the factory settings



Audio real-time

Each D-Vision card handles two audio inputs. By connecting the included cable have at your disposal offers 2 RCA connectors (white / red) where you connect the audio of the cameras 1 and 2.

If you enable AUDIO management in CAMERA OPTIONS (see above) and activate the LIVE AUDIO OPTIONS function in the PC (see above), you can hear the sound through your PC speakers by simply clicking on the camera you want. The function is also available for remote connection. The cameras for which audio playback is available from the icon will be distinguished:



Use of Maps

As we described in the previous section on settings system, D-Vision allows

create graphical maps using as a background image in BMP format that represents local and supervised by placing on them the camera icons.

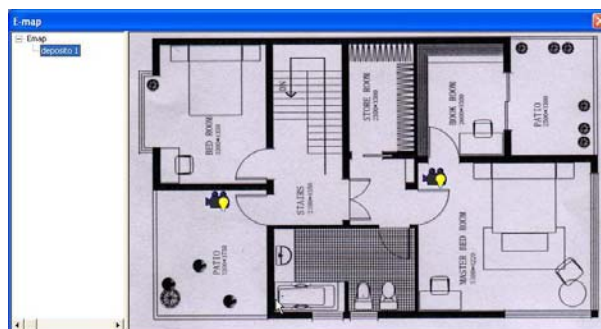
Use of Maps is very practical, especially for very large sites where only the camera name will not be immediate idea of where you are. After importing the maps of local and supervised positioned

the cameras appropriately (see previous chapter), you are now ready to use the Maps application.

To view the maps you need to click the MAP button settings drawer



A window will appear formed by 2 sections. On the left you will see listed all the maps that you have programmed in the system settings. Simply click on one to display it in the section on the right.



The icons of cameras that have set in the setting section are not only inert figurines, but can take on a different appearance depending on the state of the camera to which are coupled:

Camera with access denied signal - The camera is missing or you are wrong to set its properties.

Camera with lit lightbulb - The camera is active (in viewing or recording)

Camera with dark bulb - The camera is inactive and is not sending any video signal.

Camera with exclamation point - The camera is in function and has generated an alarm

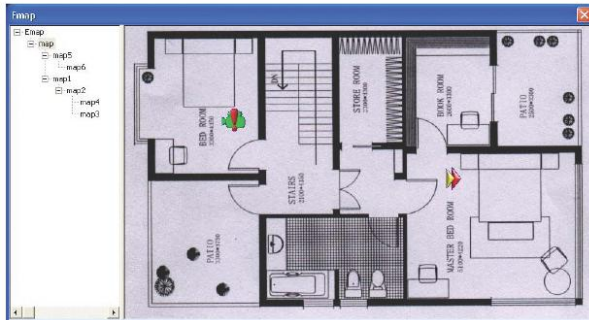
Click the various maps on the left and realize at a glance if the various areas of the protected site there are abnormal situations or both nancy. At any time you can with a simple double-click on a camera display the corresponding image.



USER MANUAL D-Vision XP-RT v. 5.1

Maps and alarms

If a camera system generated can alarm by pressing the MAP button and select the full screen map that contains the alarmed camera.



The motion detection

D-Vision allows you to generate local and remote alarm in case of intrusion. There is no need to install motion detectors or telephone dialers, but you can use the same cameras as detectors. After detecting an intrusion D-Vision can activate the

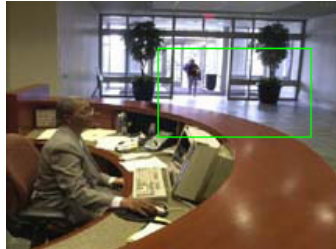
signals hearing
via the PC sound card, take pictures,
get started

recording and also send

calls
remote (needed
voice modem). First you need

setting up

for each said sensitive areas camera **MASKS**.



To set a mask click the camera image and drag the mouse to select the desired area. These areas will be the sensitive zones of the protected area within which a modification of the image (intrusion) will generate an alarm. The picture shows an example where a conveniently leave the receptionist detection mask mail free to move while generate an alarm when it enters a visitor.

There is no limit to the number of masks that can be set on a camera, but you must set at least to take advantage of the alarm functions.

The outline of the masks can assume 3 colors:

green Outline - Mask is not violated. It is not
It has been revealed any intrusion

blue Contour - It's been revealed but an intrusion
the programming of D-Vision is not enabling it to generate the alarm, for example, due to the filter of

or sensitivity to a time slot where the alarm is not enabled.

Red - violated mask which generated
alarm

In the previous chapter, under Options cameras, we have seen that for each camera you can make detection more or less sensitive to movement in order to effectively detect intruders without generating false alarms. Accurate adjustment is only carried out through repeated tests verifying that the mask color changes only when performing real intrusion.

Preview

And 'possible to see the last few minutes of recording per camera without interrupting the current recording using the preview function. Just click the camera image with the right mouse button and select the PREVIEW function. This will open the following window:



Just set in how many minutes before you want to start play (from 1 to 99 minutes) and click OK. Because the function is able to play a video, you need of course the recording is enabled and that insufficient time since the start of recording. Otherwise you will get an error message.

alarms

The detection function of the movement that we have described just above is used to start an ALARM as a result of an intrusion. For completeness, it is worth remembering that two other situations can cause an alarm: The video loss and the activation of a VG-IO card entry. But such actions are put in place by D-Vision after an alarm?

After detecting an intrusion D-Vision can perform different actions
you can be programmed
specifically for each camera. We need to return to the SETTINGS TRAY



Click SET and then choose the folder ROOM

**USER MANUAL D-Vision XP-RT v. 5.1**

As you can see corresponds to each camera in the right column an authorization alarms that activates its Options button. If you want the camera in question can detect an intrusion and generate alarms enabled the box and click the Options button. The following window appears

You can set the following parameters:

alarm duration - The first thing to set

It is the duration of the warning period. It means that when the alarm is generated it will last for the set period, at the end of which will end. When will a new intrusion will generate a new alarm, etc.

The alarm sound is played throughout the duration of the alarm, while other actions are performed only once. The minimum duration of an alarm is 10 seconds, but it is recommended that, in the generality of applications a higher per minute duration.

Activation time band - If you want the

Alarms are generated only in a period of the day (for

example alone at night) or on particular days of the week, or on a specific day of the year, activate this function and open the HOURS table to select the various time slots in which the generation of alarms will be enabled

as you see you can set an unlimited number of programming with cadenza daily, weekly, monthly or sporadic-ONE-OFF. Enabling time zones, alarm detections generate a true alarm event, with its actions

consequential, only in certain periods programmed.

Play sound - If you want the sound card

the local PC to play a sound for the whole duration of the alarm enable this feature and choose the audio file from the library.

Take a picture - Enabling this function are

subsequent photographs taken to document the alarm time. You can select the number of photos.

remote Alarm - This feature allows you to

contact a remote site in case of alarm and will be described shortly.

Enable output - Enables one or more

outputs in case of alarm (is required at least a VG-IO card installed). After enabling the function and clicked on

Options button you will

select the outputs you wish to activate.

NOTE: The alarms and logging.

If the camera is programmed to record continuously

(*Record* qualified),

I shoot

Alarm does not change anything, except possibly increase the number of frames captured.

The alarm, however, will leave an easy track to find in video memory and also can activate the various programmed actions. If it is not programmed to register the camera (*Monitor* active and *Record*

disabled), then the alarm occurrence will have the



USER MANUAL D-Vision XP-RT v. 5.1

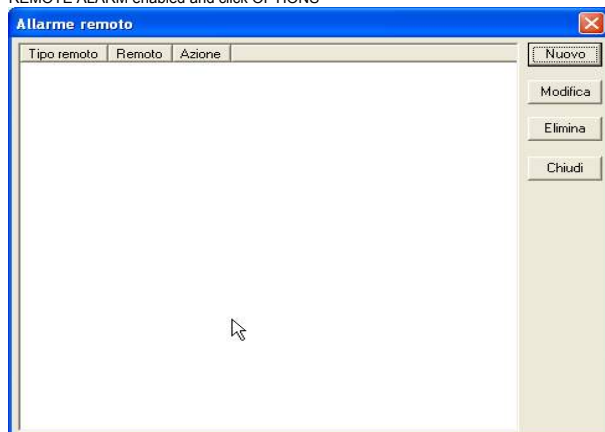
start of registration for the entire duration of the alarm.

The remote alarm

D-Vision can send alerts in various forms to remote sites. To program them back to the window just saw in the previous section of the alarm options



REMOTE ALARM enabled and click OPTIONS



The window above where you can enter all remote actions to be implemented when the programming object camera will generate an alarm. Click **New** to set the first alarm action.

You can select from the directory to the remote site then choose whether you want to enable the transmission **live video** so that the camera is immediately displayed on the remote site in the event of an alarm. It's also possible to set a sound to be played on the remote PC to the alarm reception. You have to introduce the name of the sound, as it is inserted into the library of the remote PC (not the local PC).

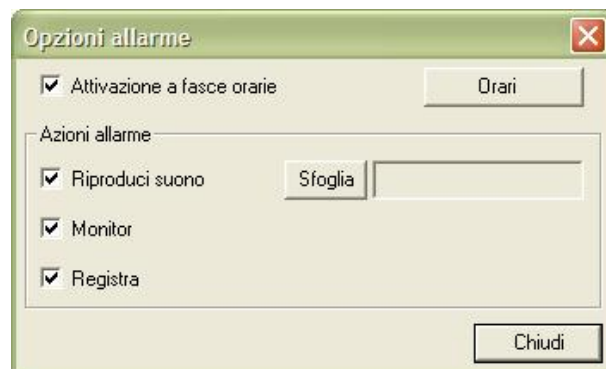
The option IF REMOTE ONLINE retry must be enabled if you want that in case of unreachable remote PC, D- Vision automatically send the video as soon as the remote PC is reachable again.

PLEASE NOTE : The local alarm duration must be sufficient to allow remote alarm is sent without interrupting the execution underway to end alarm. The recommended minimum duration of alarm and 60 sec.

Receive alerts from D-Vision video recorders embedded DV-N

The stand-alone D-Vision video recorders do not allow you to program the keyboard makes sending remote alarms. E', however, you can do so via the D-Vision software that must receive them during a call. Check to be remotely connected to the DVR and press the SET button. They will see only two tabs and CARD CAMERA. For each

camera is possible
enable alarms and acceder according to the following window



- **Activation time zones** - Enter the time slots in which you want to enable remote alarm forwarding.
- **Play sound** - Choose the alarm sound to play from the library of D-Vision on which you are working
- **Monitor** - The D-Vision Program will monitor all DVR cameras when this will signal an alarm.
- **Record** - If enabled the above option you can also enable recording.

The duration and its causes depend on the DVR configuration.



USER MANUAL D-Vision XP-RT v. 5.1

REPRODUCTION

Since D-Vision has been developed to handle extended recording has evolved systems of image consulting. All

know, In fact, how tedious search the desired image on a video cassette inserted into a VCR,

let alone when you have weeks and months to scroll. Thanks to D-Vision all this will not be a problem and you can quickly find what you are interested not only in the PC you're working, but on any other connected remote system.

The search for video clips

D-Vision keeps track of individual files programmable duration (default 120 minutes). To search for the file you are interested please click the PLAY button on the control panel. The front of the control panel will be transformed as follows:

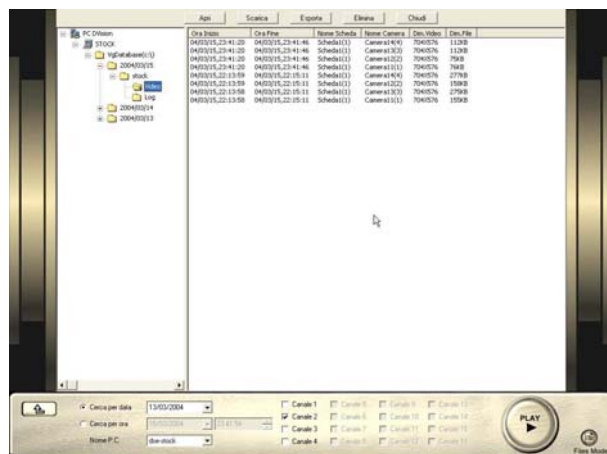


To search for the recording period of interest to choose first in the "PC Name box" PC that interests you among those available connected. You can then choose two possible search options: SEARCH BY DATE AND RESEARCH TO DATE AND TIME. and enter the parameters of interest.

On the right side of the panel you need to choose which cameras are object of the research. E' can choose up to 4 cameras will be played simultaneously.

finishing the settings, press **PLAY**.

The button **FILES MODE** bottom right also allows a manual search by exploring the hard disk and manually selecting the files of interest. You will see a screen like this



The database folders (local and remote) are divided into folders named by date and containing 4 videos subfolders (contains videos continuous), Picture (containing photos) Alarm (contains the alarm footage), clips (contains clips cut and saved). Open that of interest to you and select the file.

NOTE: The search can take place even on connected remote PCs, as long as it is entered into D-Vision with a password that allows access to the area. In this case you have to press the button **DOWNLOAD** to download the files to the local PC and then play it.

It's also a button **EXPORT** to copy the files to another folder, and the button **DELETE** getting rid of unnecessary files.

Finally there is a button **CREA** that allows you to burn your files directly to CD. The DV Player reader, if installed on the PC, also will be burned on the CD.

This function requires that both installed the burning program NERO Burning ROM www.nero.com

Reproduction

Once unearthed files of your interest you have to do is press the PLAY button or double-click on one of them to open the playback window:

Superimposed can be reported:

Tab name (top left)

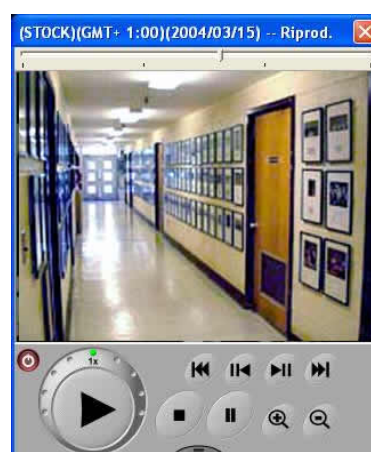
Camera name (top left)

Now start clips (in left)
bass to

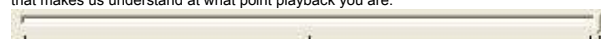
Now the end clip (bottom left)

Now current play (in left)
bass to

At the top there is a scrollbar



that makes us understand at what point playback you are.



It is a very important tool in that you can drag and scroll very fast the

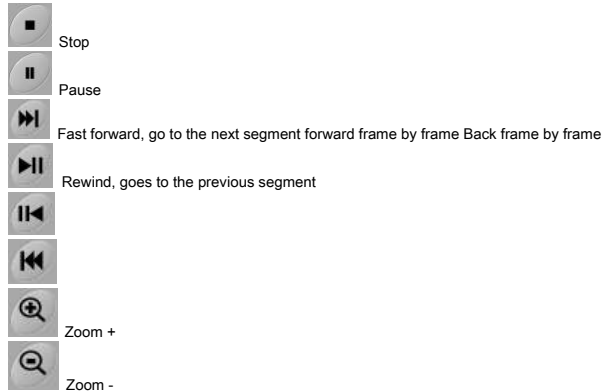


USER MANUAL D-Vision XP-RT v. 5.1

images.

PLEASE NOTE You can not drag the bar on short duration video files.

Under the window there are the playback controls:



The feeds and fast rewinding are made in lengths of 160 frames caduno. Just press the back / forward button to skip to the next or previous segment.



The PLAY button which obviously serves to to boot there reproduction is particularly high performance since it is equipped with a ring nut that allows to speed up or slow down playback to taste (slow motion)



Pressing the bottom tab is accessed some controls that allow you to manipulate the video.



Start CLIP. And 'possible to click this button to start a selection of movie you can save separately, for example to isolate a particularly important scene



End CLIP. End selection



Save CLIP. Save the selected clips in the CLIP folder database



Play CLIP. After creating a selection with the above command you can play it with this button.



It allows you to take a picture of the movie in real time, so you can then print, send via e-

mail or save to disk in order for example to provide a printed documentation of the incident.



Show and hides impressions over the name of the card, the camera as well as current date and time and start / stop recording.



Change the color overlays to provide contrast with the background color.

The search for photos

D-Vision can take pictures on various occasions. They are saved in the Picture folder. To find the photos of interest to select them with research in FILE mode

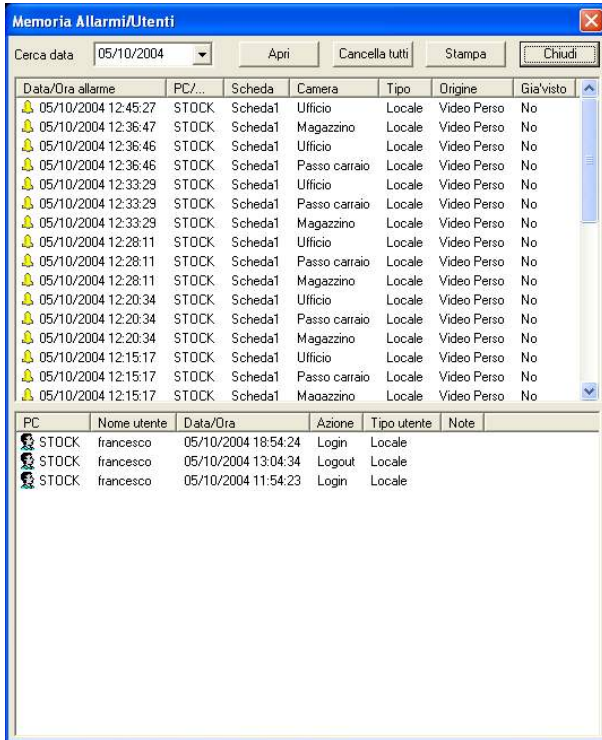
The photos are saved in folders which have names like: dyyyyymmdd ie d + year + month + day, eg. d20020625. The last 6 digits of the file name are hh.mm.ss ie hours.minutes.seconds. Double-click on the shows. And 'possible to click the print button to print it being able to choose the scale with which to print (zoom +/-).

The alarm memory and user memory

D-Vision keeps track of all alarm events generated by the cameras (local and remote) and all user access (local and remote). For the pleadings must click LOG in the tray settings.



It appears the window with the memories listed at the top of the alarm events and the underlying user access.

**USER MANUAL D-Vision XP-RT v. 5.1**

Select the day of your interest in the above box.

In the alarm menu they are listed all the alarms generated by the local PC or received from remote PC. The last item on the right (GIA 'SEEN) will indicate NO if the video has not yet been viewed, after which it will become YES. The SOURCE column indicates what has triggered the alarm (CAMERA, VIDEO or EXTERNAL INPUT FAILURE).

Double clicking on the alert you will open there registration related to it (if it was programmed) E 'possible, with the top buttons, delete events in memory, or print the list.

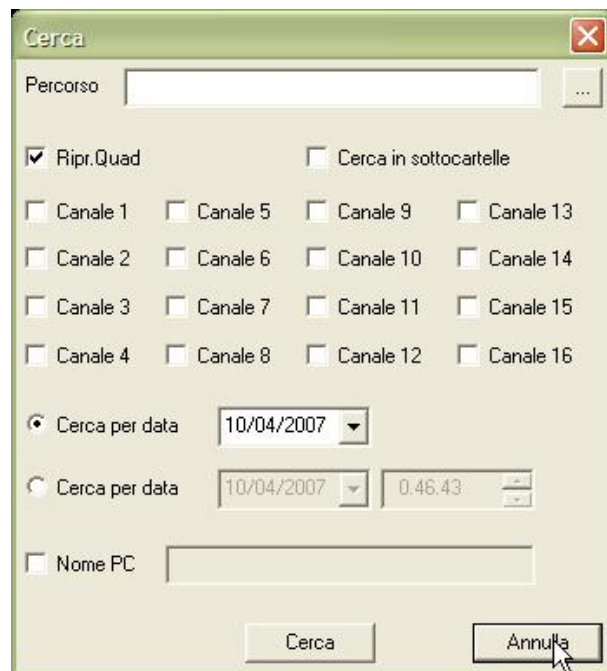
DV-Player

Together with D-Vision software is installed in the program folder a practical viewer VGZ movies. It is a small file named DV PLAYER.EXE that requires no installation and allows movie playback of D-Vision. E 'can copy it to a floppy disk or in a CD along with the film, to allow viewing of the same without having to install D-Vision.



The control functions are the same as the playback window that we have already described. In most other convenient functions are available:

- **SEARCH FOR** - A handy search box lets you search times and cameras in any folder.



- **PICTURE** - allows the image adjustments to correct any imperfections shooting.

- **SEARCH SETUP MOTION** - E 'can search the video only plays the movements in a mask at will. Here you can set the parameters

of sensibility of the search



USER MANUAL D-Vision XP-RT v. 5.1



- **ENABLE RESEARCH MOTION** - is used to activate the motion search. During playback, draw with the mouse a mask (or more, max 3) image playback and DV-Player will begin fast playback until it detects a motion in the selected.
- **ENABLE CONTINUOUS PLAY** - Enabling this option at the end of a file being played D-Vision Player try automatically the nearest temporally camera files in the folder and will start there playback.
- **TEXT IMPRINT** - In this window you define which information it's recommended play over video.
- **FROM A VG AVI** - This small program also allows the conversion of a D-Vision VGZ files to AVI (Function From VG to AVI) for playback on the player to Windows. This operation

is however inadvisable in Given the considerable size of uncompressed AVI files and the long time required for the conversion.

If you need to convert to AVI you are recommended to first select a short CLIP of interest and save it separately and then make the conversion.

DV player to stop playback, conversely play at normal speed.



USER MANUAL D-Vision XP-RT v. 5.1

CARDS INPUTS

D-Vision allows of to check different external equipment. These devices can be of two types:

input / output unit which can be used for connecting external inputs (eg. sensors) and relay outputs (eg. sirens, lights, alarm devices)

Cameras suitable for the speed dome via serial control of PTZ (Pan-Tilt-Zoom, namely the movements of the motorized pan, tilt and lens control).

Let us first the input / output unit

The input / output modules

D-Vision accepts two types of input / output modules for connection with external electrical devices:

VG-IO = internal card to be connected directly to the capture card

PT811 = External module to connect to the serial port of the PC.

The PT811 module provides 8 inputs and 8 relay outputs, while the VG-IO or disclose 4.

I / O internal VG-IO



VG-IO

It connects to the capture card via a flat cable and is powered by means of the typical cable PC power splitter (supplied). The card is designed for mounting on the back of any ATX, from which, once carried out the installation, will be visible to the terminal connections.

On the card, next to the 20-pin connector, there is a jumper (A) which must be opened.



The 4 inputs can be connected to alarm sensors
or to stations
The 4 relay outputs can directly drive up to 7A to 30 VDC.

Theft Protection.

Below the maximum budget of VG-IO you can to card type:

- DV-XP4 ... Max. 1 VG-IO card

- DV-XP8 ... Max. 1 sheet VG-IO DV-RT4 ... Max. 1 sheet VG-IO DV-RT8 ... Max. 2
- VG-IO cards Install a VG-IO module is simple: just plug the card

acquisition and will be automatically seen by D-Vision software.

External I / O Module PT-811

External modules have the advantage of being carried away from the PC. In addition come in handy in case you need a very large number of inputs / outputs are not sufficient and the VG-IO cards. The module is composed of a main element, named: **PT811** which provides 8 inputs and 8 open collector outputs. For it can connect an additional module called **PT-908** which transforms the 8 OC outputs in relay outputs.



PT-811



PT-908

The I / O module PT811 communicates with a PC via an RS485 serial port. Since the serial ports of the PC are normally a RS 232 RS232 / 485 converter is used to be ordered separately (ref. SD-232485). The module must also be powered at 12V DC, for example with a RE-AL2 power supply (not supplied). The advantage of RS485 port and can fix the module up to 1 km away from the computer. The RS232 / RS485 converter is used to connect the PC COM port on one side and has the 2-wire RS485 port on the other. They must be connected to 2 terminals of the PT-811 using a twisted pair that is, with the wrapped cables between them. If your interface RE232 / 485 has 4-wire RS485 use only the first two (+/- TX). To connect the relay module PT-908 must physically wire the 8 OC outputs of the PT-811 OC to 8 inputs of the PT-908. They will be transformed into 8 inputs / 8 relay outputs high control capacity (5A at 220VAC, 12VDC 3A) of more practical use.

E 'can connect to the same serial port on your PC up to 32 PT811 modules, provided they are set to different addresses (set by programming special software)



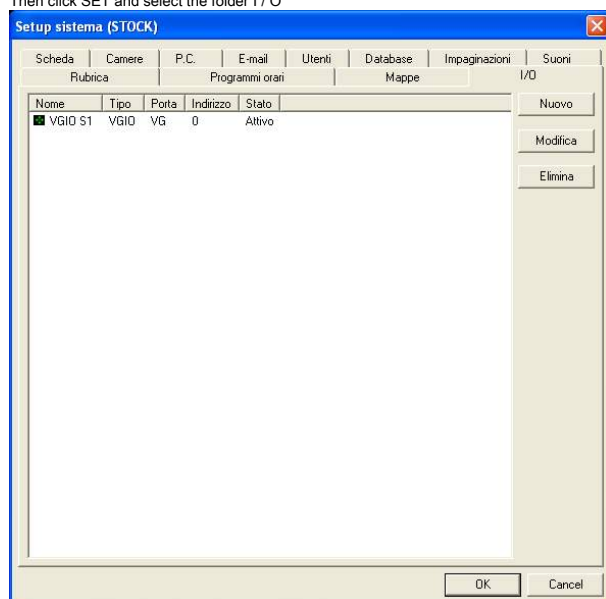
USER MANUAL D-Vision XP-RT v. 5.1

The recognition of I / O modules

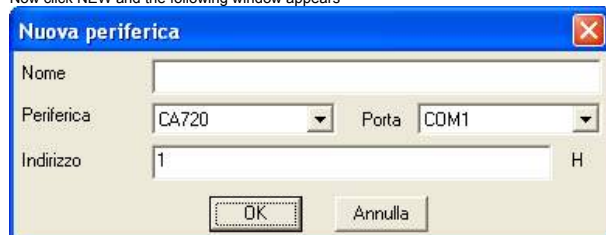
After finishing the installation of the module I / O you must make it recognize the D-Vision program that will start using it. Open the drawer of the SETTINGS



Then click SET and select the folder I / O



Now click NEW and the following window appears



Here you can set:

- Name of the device you want to install the device type Communication Port
- Address

Select the card type PT811 or VG-IO and the port to which you've connected (for PT811 only). The address you can leave it on one unless you want to stop using the same COM modules. In this case, enter

the hexadecimal address corresponding to module inserted.

If there is shown a door opening error and failed to add the module is because D-Vision does not communicates with the card. Check the goodness of

connection and especially the proper functioning of the RS232 / RS485 converter in the case of external module.

If you are able to activate the module you will see that the LEDs near the door of the PT-811 RS485 module start flashing.

Now you can select the name of the module I / O and press CHANGE



This window is common to both the peripheral inputs / outputs that to speed-dome cameras. You will find the inputs 1 to 8 and outputs from 1 to 8. In the case of a VG-IO card you will use only the inputs / outputs buttons 1 to 4. At the top there is the option:

Enable watchdog - This option enables the watchdog function of the D-Vision system. Each D-Vision card is in fact provided with a cable for the Watchdog which can be connected between the jumper JP2 and the reset of the card connector of the

PC; for instance the one to which is connected the front reset button.



USER MANUAL D-Vision XP-RT v. 5.1

The watchdog function is not needed for operation of the board, for which you can not safely connect the cable; But connect it will restart the PC in case of malfunction

of the software D-Vision.
If the PC are inserted more D-Vision cards simply connect the watchdog of any of them.

Consider that the D-Vision watchdog function is able to detect errors made by the D-Vision card, not from other PC components.

Now click on any output and you can select the options.

Output Options

The window you see determines the output electrical behavior selected. There are different settings:

First name - For example siren, flashing light, Open-door, GSM transmitters, and whatever you want to activate.

Type OFF / ON - normally inactive output that active in case of alarm

Type ON / OFF - normally active output that off in case of alarm

Puls.1 - normally inactive output that is activated pulse. E 'can be programmed to the left on the time and the pulse off time and the number of pulses to be carried out as a result of activation.

Puls.2 - Output as above, but normally active.

Exchange - Output for stable exchange. If you select this option, the output will be activated in case of alarm and will remain in this condition until a new alarm not report to the rest.

Top the option is available:

Use PTZ. If you enable this option the next selection box is activated which allows you to choose which function to give this output in the control of movement of

cameras with pan motorized. The units inputs / outputs can in fact be used very effectively to the control of Motorized Pan & Tilt, where the control up, down, up, down, zoom, close, zoom away etc. They are imparted with simple relay contacts.

In CAMERA OPTIONS, we've already seen, you can associate the I / O card that you plan to one or more cameras. obviously

is necessary that provvediate suitably to the output connection with the command of tilt depending on the latter's technical specifications.

Input Options

If you now click on an entry you can set the features.

The options are as follows:

First name **entrance** - Infrared, button, microcontact, probe, thermometer, anti-theft alarm, and any type of detector you want to connect.

Input type - In this section you have to decide if the input in question will be used for the generation



USER MANUAL D-Vision XP-RT v. 5.1

direct alarms or rather to enable / disable the detection of alarms. If you choose the option

Alarm They will enable all of the following items and you decide what action to take when this input should generate an alarm. If you choose the option **Enable / Disable Alarms**,

options following are turned off and the entrance will only serve to arm or disarm the alarm detection, a bit like switches on or off a burglar.

Programmers enable times - As well as

we have seen for the detection of camera movement (see above) that can be activated only at certain times of the day, even the alarms generated by

external inputs have a

programmable timer that allows you to activate and suspend the input capacity to generate alarms. If you want to do this, you have to activate the option and then click on the Programs button to set the time slots during which

detection

alarm will be activated.

Play sound - If you want the sound card

the local PC to play a sound for the whole duration of the alarm enable this feature and choose the audio file from the library.

start recording - If you want to

occur alarm, following the activation input, the recording is started, enable this function and choose which one or desired cameras are being recorded. A window will open that will allow you to toggle the camera. In the case of a speed-dome camera, controlled via serial and recognized by the software as a device, you can also indicate on which the default position (PRESET) move, for how long and at what position remain back. If you want the camera rests on the preset and do not return anywhere else selected the shooting time = 0

Enable output - Here you can choose to activate

one or more outputs if the input that we are planning to generate an alarm.

The local and remote control of the relay outputs enables advanced applications able to combine the vision and the remote control, with features very useful in industrial processes and automation.



Output Drive

Once the I / O device configured it is possible to activate the 4 outputs to taste. Just turn on the REMOTE CONTROL with the button to the left of TRAY SETTINGS, then press the arrow button between the three options

of control



available.

It will see the control panel on the right where you can select the I / O board in the top box of choice and control outputs manually and switch between them with a simple click.

The left output circle will change from white to black to highlight that the activation was carried out. E 'can also activate outputs on remote PC.

**USER MANUAL D-Vision XP-RT v. 5.1**

CAMERAS SPEED-DOME

The Speed Dome cameras are sophisticated motorized cameras, whose movements and the objective of which are remotely controllable through a twisted pair, usually an RS485 serial line.



These cameras provide a normal analog video output that can be connected to any input of the D-Vision card. The control of the displacements is normally carried out with a control console equipped with Joystick



D-Vision allows you to control several models of cameras speed dome, the most common on the market, replacing a control console.



The speed-dome cameras are connected via the serial port of the PC (typically RS232). Depending on the cameras used may be employed directly to the RS232 standard, or a converter may be necessary to switch to RS485 or RS422 (Ref. SD-232485).

It's very advisable to use cameras Speed Dome series SD-22 and SD-27 for which it is guaranteed the absolute compatibility with D-Vision commands.

If, however, it was available on cameras already existing, D-Vision includes the main communication protocols to also control Speed Dome of different brands.

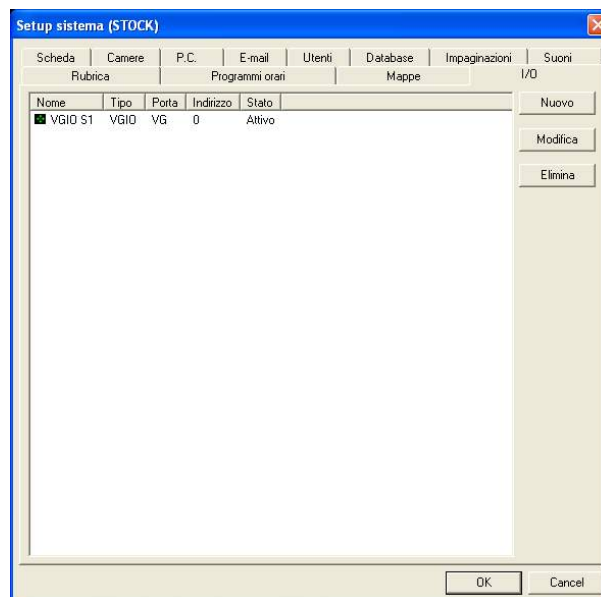
Connect the speed dome cameras

To connect the cameras to the COM port of the PC, follow the instructions that came with the camera. A single serial line can accommodate many cameras of this type, provided they have different address. For

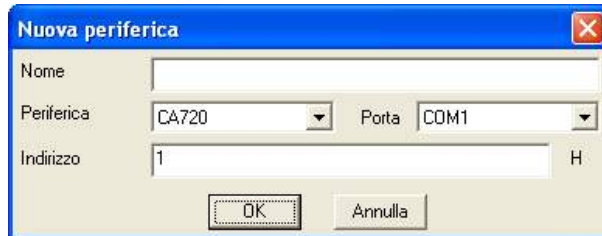
the correct realization of the wiring do Referring to the camera documentation. If used cameras SD-22 and SD-27 series you need the SD-232485 converter to which cascaded all cameras via a twisted pair. The address of the cameras

imposed by microswitches and allows you to connect up to 32 cameras at a single COM port of the PC.

Once the wiring properly open the TRAY SETTINGS, select SET and then choose the folder I/O.



Now click NEW and the following window appears

**USER MANUAL D-Vision XP-RT v. 5.1**

Here you can set:

Name of the camera that you want to install the device type (ie the protocol to use) Communication port address expressed in hexadecimal

D-Vision has the following protocols to control the speed dome models:

Pelco D at 2400, 4800, 9600 baud (for Speed-Dome SD-22/27 series cameras)

Pelco P at 2400, 4800, 9600 baud (for Speed-Dome SD-22/27 series cameras)

Lilin PIH717X Dynacolor

CA720

Philips CSS (requires convert. RS232 / 485 Philips) Samsung

Panasonic WV-CS850 Mikami

PTC103A Sensormatic - RS422

The SD-22 and SD-27 series cameras using Supported Protocols Pelco P or Pelco D indifferently. The speed depends on (2400, 4800, or

9600) must be the same one that will set
on camera
by microswitches.

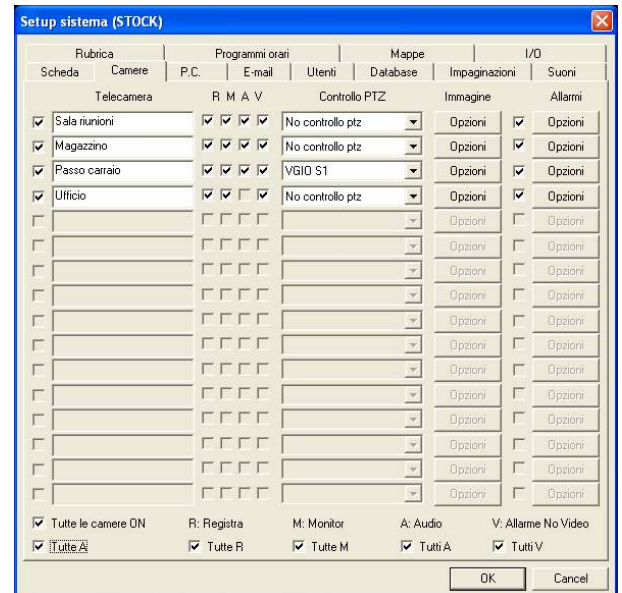


NOTE: You can not connect to the same COM port of the PC, various types of Speed Dome that use different communication protocols.

Clicking OK D-Vision will try to recognize the device on the indicated port and will indicate the activation in the STATE column. If there is shown a door opening error and failed to add the module is because D-Vision does not communicates with the device correctly.

Subsidiaries there correctness of
connection, the address setting and the choice of protocol.

Once D-Vision has recognized the new Speed Dome to control you will have to match the corresponding video signal. Get back in the OPTIONS CAMERA we described above and select PTZ control you just created in the video input side corresponding to that camera.

**Control of PTZ Speed Dome Cameras**

At this point you can try to control the

speed domes. That's enough activate the

REMOTE with the button to the left of TRAY SETTINGS, then press the center button of the three available control options.



It will see the control panel at the side with which you can control the camera in all his movements. To choose which camera control click on the image so that it appears

the hand indicator
in the upper right. The virtual console of D-Vision allows the following commands

direction Control

It is activated by clicking on the round knob at the base of TV remote.
It allows you to move the camera all directions.

Iris, Focus, Zoom They allow you to adjust

the lens aperture, there
focus and focal length (zoom).

Preset

Only Speed-dome camera support presets which are predefined positions towards which

the camera may
head with a simple click or even automatically, for example after activation of an input (sensor).





USER MANUAL D-Vision XP-RT v. 5.1

The presets allowed by the camera will already be active on the remote (MEM1, MEM2, etc.). Depending on the type of camera may be available up to 32 different presets.

To set the first preset just position the camera as desired and click the button with the wrench to the right of the preset ..

NOTE: Only for Iliin PIH717X camera, you must first click the desired preset button, then position the camera and click the wrench to store the preset.

Now that you have created the presets of your interest you can view
the image simply
by clicking on it, or you can send the camera at that point automatically following an alarm.

Cruise

Once programmed the presets it's possible
program the cruise function that consists of a predetermined sequence of movements that the camera may run. You must click the wrench icon to the right of the CRUISE button. Then enter one by one the desired preset with the retention time of each position. Now just press the button **Cruise** because the camera the sequence to begin pre configured.

NOTE: Some speed-dome cameras do not support this function

Auto Pan

This function allows the selection of two preset (see above) and make sure that the camera is constantly moving between these two presets

so as
horizontal, for example to control a wide open area.

You must click the wrench next to the written

Car and then to select the two presets
departure / arrival and speed of movement. Now just click **Car** to start the movement.

Other controls

other controls are available to use for the cameras that allow it.

The ball left the various navigation options will become black when the function is active.



USER MANUAL D-Vision XP-RT v. 5.1

D-VISION SERVER

D-Vision Server is a program that is automatically installed with D-Vision and that enables remote connection via local network (LAN) or the Internet using TCP / IP protocol. To start double-click on the desktop icon.

The supervisor

When you first start you are asked a supervisor username and password twice, enter them and Remember them as if you'll have to forget them

reinstall the D-Vision program.

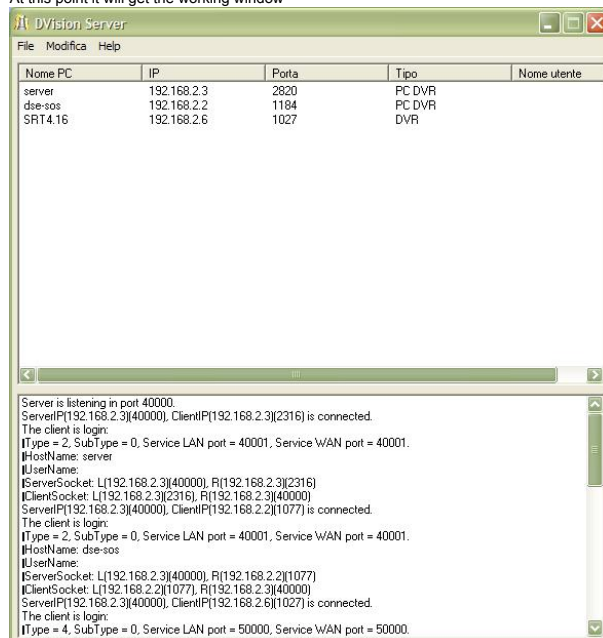
The supervisor code is necessary to change the settings and close the program.

When you first start you will be also asked to confirm that the listening port of the program, which by default is 40000 and you should not change.

Before making any changes to the settings of D-Vision Server is must press FILE / LOGIN and enter the correct code.

The design window

At this point it will get the working window



Once your network connections will be built here you will see all PCs connected to the D-Vision Network, with their name and IP address. For the moment, it is not yet connected to any PC, you will not see an active connection. When you plug the remote D-Vision with both capture card than without, or D-Vision embedded video recorders, you will see them appear in the upper window.

The name used to indicate the PC is the name entered as a network identifier in Windows TCP / IP properties. Next to the network parameters it will contain the sentence DVR PC (D-Vision Software) or DVR (VCR D-Vision Embedded DV-N Series) In the lower window shows

The messages diagnostic that may be useful to identify any connection problems. Clicking the

right click on a device connected leads to two types of command:

- Disconnect: Terminate the connection with the device
- Disconnect E rifiuta: Ends the connection to the device and prevents future from that IP access

Use D-Vision Server for access from LAN

D-Vision Server is a totally free program from D-Vision. It can be installed on the same PC it is installed on the card, but also on a different PC. As a rule you should install it on a PC network with good speed and bandwidth. Each D-Vision program installed in your network can connect to the D-Vision Server and from there all the PCs connected to it. E' in this way can accommodate more network PC connected to cameras and countless

PC without connected cameras to be used only as monitors.

Use D-Vision Server for access from the Internet

Access via the Internet works in exactly the same way as access to LAN. It's very advisable to have an Internet connection with a fixed IP address, not always having to reconfigure the IP for each access to the web.

Auto Start

E' D-Vision Server can be set so that it starts by itself at every Windows startup. To do this click FILE - AUTOMATIC START.

Web access

E' can enable the ability to access D-Vision Server, and then to D-Vision systems connected to it via Internet Explorer (see below).

Access Restrictions

This function has two possible purposes;



USER MANUAL D-Vision XP-RT v. 5.1



- And 'possible to enable access to D-Vision Server only from certain IP addresses must click EDIT - OPTIONS IP.

The window that appears will enable the field at the top or bottom depending on the option you choose in the section of the upper IP CONTROL TYPE:

Prevent access to the IP list - All the

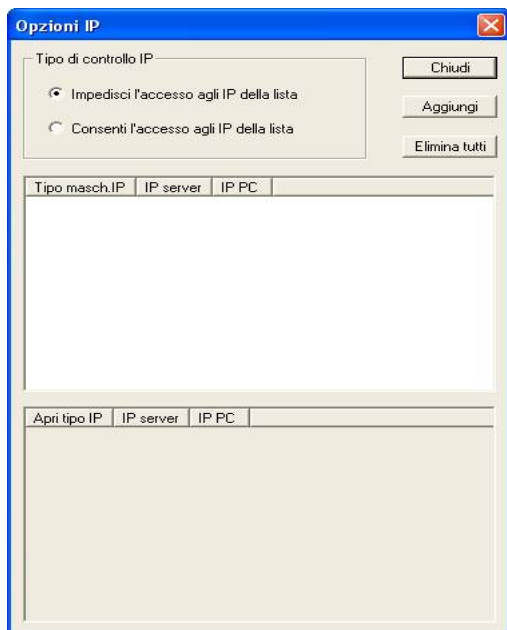
IP addresses that you post will have access to D- Vision server, even if username and password are correct. This option is used in a network with many PCs to escluder some stations from accessing the system.

Allow access to the IP list - Only

IP addresses that you post will have access to D-Vision server if the username and password will be corrected. This is useful to protect the network from unauthorized external attack, especially in relations

via internet. Anyone trying to

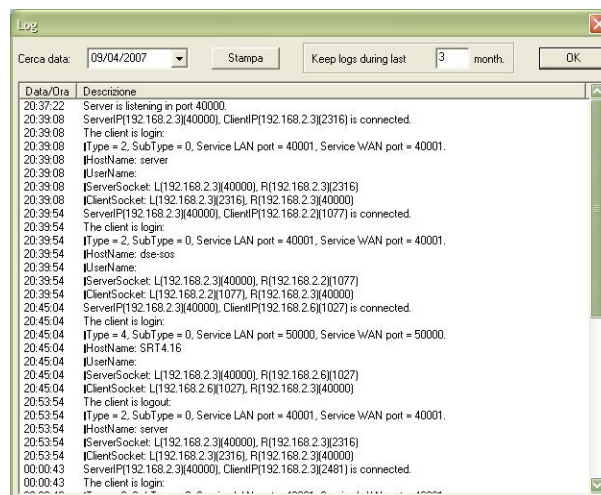
access the server from another computer than those authorized, despite having D-Vision software and password, it will surely locked. Imagine, for example, the case of a former employee of a company aware of the password.



After choosing the mode of operation you can add the first address by clicking ADD.

Log

It 'a memory of all network communications incurred by D-Vision Server divided by day





USER MANUAL D-Vision XP-RT v. 5.1

REMOTE ACCESS VIA LAN / INTERNET

Remote access via LAN and over the Internet works the same in that they both take place over TCP / IP protocol.

In this section we will call "Local PC" the computer connected to cameras is usually located on the premises to be monitored, we call instead "Remote PC" the PC from which you display the images at a distance.

The LAN connection

The LAN connection is ideal for companies where there is already a network of PCs. You can install one or more D-Vision cards on several computers and install the program only on the computer that will act as a pure monitor. From any PC on your network will have access to all PCs equipped with the card so have several monitors and recorders without additional wiring in addition to the computer.

Requirements for connection via LAN

The LAN connection does not require that a local PC network based on TCP / IP protocol. Each PC must be equipped with network card and correctly recognized within the network itself.

At each PC in the network equipped with D-Vision software you must be assigned a unique IP address and it is preferable not to use the automatic assignment of IP (DHCP).

DHCP stands for Dynamic Host Configuration Protocol. In a network of this type each PC receives its address from a network device (DHCP server). D-Vision supports this operating mode but it is preferable that the IP address, least of PCs equipped with D-Vision card is resident in the PC is changed to avoid making necessary reconfiguration of D-Vision.

The configuration of a network is not treated in this manual and it is assumed that the installation of the program is carried out on an existing network installed and running.

Who should the Connection via the Internet

The Internet connection is ideal for remote access from a PC away from the monitored site.

The connection via the Internet

The basic requirement to make a connection between two PCs via the Internet and, of course, that the 2 PCs are properly connected to the Internet. You can make the connection with any means: analog modem, ISDN modem, ADSL modem, fiber optics etc. Obviously the greater the bandwidth that the means of connection allows you and the greater will be the number of frames / second that will be seen remotely.

D-Vision automatically adjusts to the available bandwidth so it is also possible to work with very poor bands.

One important thing to consider is the difference between the maximum bandwidth of your connection and the bandwidth actually available. Internet providers often advertise speed, but they are never reached in reality as the maximum resource

it is used from more users at the same time. You can easily account for this "trick commercial" asking how much it would cost to have a band, even minimal, but always GUARANTEED.

In order to make the best of the internet connection is highly recommended to choose, at least for the local PC where you connect the camera, an ADSL subscription because, in addition to broadband, will give you the opportunity to always have your local PC on the network and ready for connection. Apart from this it is almost mandatory to buy a pass that grants a fixed IP address, so make sure the address you want to connect without having to know every time. Here we explore the topic.

The IP address

Each PC of a network is distinguished by its own IP address. Similarly, each computer making an internet connection is identified by an IP address, just like it does on a local network. If you use a paid provider, and then you have a subscription on your behalf, it should not be hard to let you assign a fixed IP address, although you will have to pay for this service. This way each time your computer will go to the network will always be identified with a default IP address.

If you used to free internet connections (TIN, INFOSTRADA, Tiscali etc.) you will be dealing with



USER MANUAL D-Vision XP-RT v. 5.1

a dynamic IP address (*FLOATING*) namely that changes whenever made a connection.

The remote connection of D-Vision also works in this situation, but each time the local PC will disconnect from the Internet IP address will change and you have to know to be able to connect from the remote site.

If you plan to use the remote control of D-Vision assiduously it is undoubtedly preferable to have a fixed IP, otherwise you will need to configure your PC each time you connect.

The problem arises only fixed IP on the local PC connected cameras, while there is the remote sites, where you can safely have a normal subscription.

If there is possible to get a fixed IP you do not have some loopholes that allow you to make permanent a dynamic IP. The first is to use a DDNS service, available on the network, which registers the new IP of your PC to any Internet access, and I will simply reveals querying the site. There are several similar services in Italy and free.

Another system is installed between the PC and the network a firewall or router hardware to keep always powered. In this way, even turning off the PC, the connection will remain standing and your IP address will be the same.

The IP address of the FASTWEB network

In the major Italian centers you can connect to the Internet via optical fiber. The major provider that now offers this service FASTWEB. The internet connection

Optical fiber offers

surely the widest bandwidth availability possible today, so that you will see even remotely the same number of frames / second you see at the local, just like you were on a local network.

But you must consider that Fastweb assigned to PCs connected to an internal address to its network that is not visible from the outside. To use the remote connection of D-Vision is necessary to request the PUBLIC IP service that gives a fixed IP address and visible from outside the network (extra cost). The public IP address is not required if both PCs are located within the Fastweb network. In this case, however, you will be dealing with a dynamic IP address for which is as good as in the previous section.

How to know the IP address of a PC

- Toss a DOS window available between the Windows accessory programs.

```
Microsoft Windows XP [Versione 5.1.2600]
(C) Copyright 1985-2001 Microsoft Corp.

C:\Documents and Settings\DSE>ipconfig

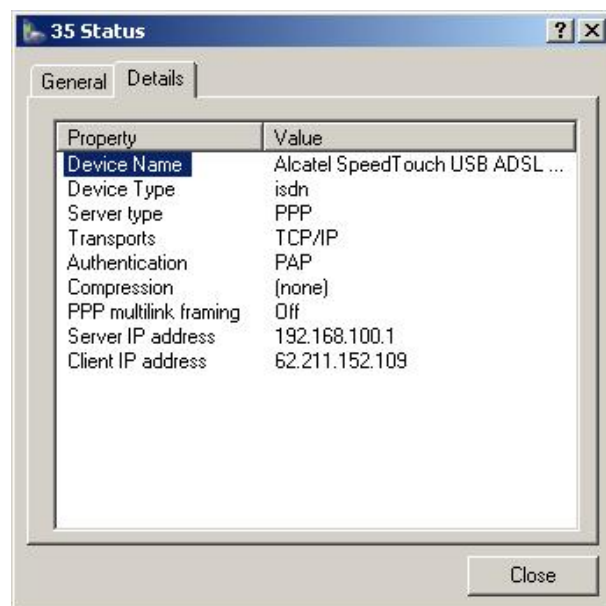
Configurazione IP di Windows

Scheda Ethernet Connessione alla rete locale (LAN):
    Suffisso DNS specifico per connessione: fastwebnet.it
    Indirizzo IP . . . . . : 192.168.2.3
    Subnet mask . . . . . : 255.255.255.0
    Gateway predefinito . . . . . : 192.168.2.1

C:\Documents and Settings\DSE>
```

Type IPCONFIG at the command prompt and press ENTER. They will see the TCP / IP parameters. The second line is the IP address assigned to your computer

- If you are connected to the Internet with a modem (analog or DSL), click the right mouse button on the PC 2 in the task bar at the bottom right corner, then choose **STATE**:



Below appear the addresses of the server and client, which is your PC This is the IP address that is assigned to your PC over the Internet.

preliminary checks

Detect the IP addresses of all the PC or DVR you intend to connect and annotate them.

Make sure your PCs are visible on the network. The easiest way to do this is to open a DOS window and type PING followed by a space and the IP address of the other PC. They will appear the replies received PC called.



USER MANUAL D-Vision XP-RT v. 5.1

Control password

Why the remote connection will be successful if you access the D-Vision remotely with a password that is registered in the D-Vision place to which you connect.

To avoid mistakes agrees that the initial supervisor password prompt of the various D-Vision always to insert the same password in order to have with it access to all sites. Beware of lower and upper case

because Passwords are CASE SENSITIVE.

Connection via D- Vision servers and P2P connection

D-Vision 5.1, unlike the previous versions, allows two types of TCP / IP connection,

both performed either via LAN or via the Internet:

- Connecting with D-Vision server. IS' connection to use if you intend to use more than 2 D-Vision software. The server program allows the connection of countless D- Vision systems, both equipped with card (PC DVR) for the limited monitoring and stand-alone D-Vision video recorders (DVR).

- Connection Point to Point - E' a simplified connection, from use self Yes want Simply connect to a D-Vision system (PC or DVR card) from a single remote-D Vision.

Connecting with D-Vision Server

The server program (see descriptive section above) is crucial for access via LAN or Internet multipoint since it handles the communication between the different connected PC.

To proceed with connection via LAN or INTERNET requires that a D-Vision Server program is running on at least one PC on the network, or on one of the PC connected to the internet.

D-Vision server can be run on the same PC where they live cameras, or on another even where there is no D-Vision card. Typically in a PC network will exist one D-Vision Server Program running and all users will connect to it.

On all PCs, whether they are equipped with card or not, you must install the D-Vision client program, the same used for the card's control.

The sequence of operations to be performed is as follows

Launch the D-Vision Server on one PC Connect the local PC D-Vision program (the one with the card) to the D-Vision Server.

Connect the D-Vision program of the remote PC to the D-Vision Server, with similar procedure.

Access from the remote PC to your local PC Operate remotely

Connect D-Vision D-Vision Server

To connect a PC to the D-Vision Server, proceed as follows:

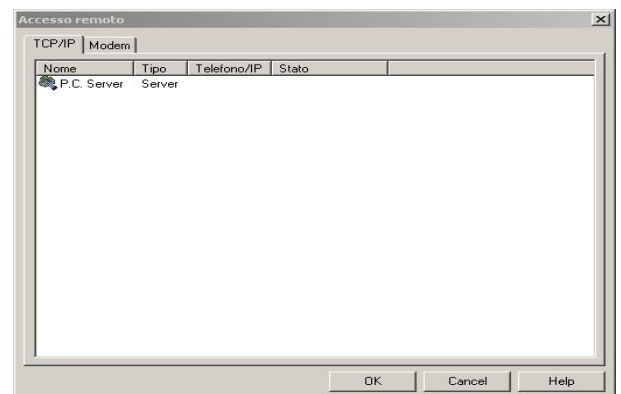
Throwing D-Vision

Enter the IP address of the PC where the D-Vision Server resides in the directory of the D-Vision software. (See above how to CONTACTS).

Click the Remote Access button (LINK) which is the first on the left of the setting tray.



This will open the dial-up window where you need to select the folder TCP / IP



You will see all listed IP addresses of sites set as a server in the directory. Presumably, you will find the list only the IP address of D-Vision server that you have added to your address book. Double-click on it and you'll see the item in CONNECTED STATE column.

RELATED If the item does not appear, ensure that your PC's D-Vision Server is accessible and are not depending on the network firewall. Do not proceed without resolving the problem because it would be useless for the purpose of the connection.

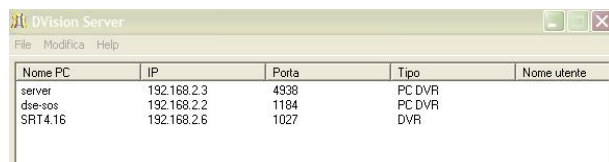
Now you need to connect to the D-Vision D-Vision Server all peripheral. So the same procedure described above should be performed on all the PCs you want to connect, whether they have the D-Vision card is that they are the only display points and have only D-Vision software installed.

When finished in the D-Vision Server window, you'll have all D-Vision systems connected to it. In the following example we have been linked 2



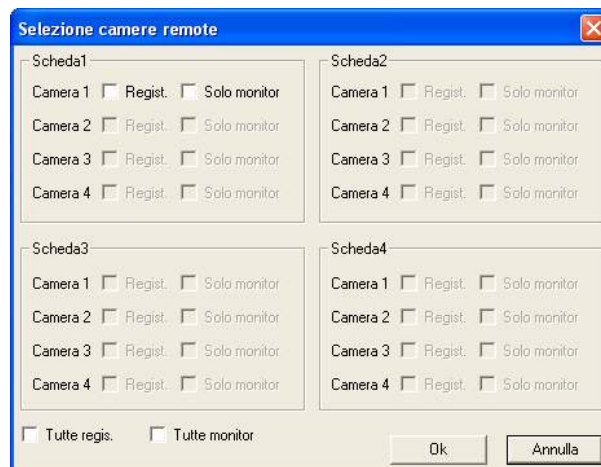
USER MANUAL D-Vision XP-RT v. 5.1

D-Vision programs and a stand-alone video recorder



IMPORTANT NOTE : And 'likely to decide to run the D-Vision Server software on the same computer where you installed a D-Vision card and where so you running a D-Vision for its management.

The fact that the D-Vision is running on the same PC D-Vision Server does not mean they automatically connect. You'll have to make a remote connection to the D-Vision server just as you do from a remote PC. The connection address will be the same as the PC address where you reside both programs.



Select the cameras and press OK. You can now work from remote PC with all available commands as if he were the capture card on your PC. The main controls are detailed in the following pages.

Connect to the D-Vision in registration

Once established the connection to D-Vision server operated on a remote PC from which you want

make there connection.

First, activate the remote control

with the button to the left of the drawer front of

software. If it is not currently vision HOST
Select the remote PC icon.



There appear all PCs connected at that moment to D-Vision Server.

At this point you just have to double click on PC you want to connect and get into connection. If you double click should appear

the demand for USERNAME AND PASSWORD means that the destination computer does not accept your LOGIN. Check that you have had access to the D-Vision with a user name and password that are also included in the D-Vision users in the list of D-Vision you want to connect.

After connecting you will see the screen divided into a variable number panes depending on the PC card or the remote DVR connected. At this point you can use all the commands of D-Vision and will act directly on the remote PC.

Press the REC button that will allow you to see the cameras connected to another PC. You will see the screen of choice of the cameras where you can choose which camera to view and record whether or not remotely on your PC.

Connection Point to Point

If you simply connect a single remote D-Vision system with a recording (both PC DVR DVR) you can use a simpler procedure which is the P2P connection.

Working on the remote-D Vision, enter the IP address in the phone book to connect taking care to select the type PC DVR D-Vision cards on PC and DVR for stand-alone D-Vision video recorders (see above instructions category). The communication port is automatically set to

default value

used by the D-Vision systems and do not need to edit it unless you have not modified the door in the system settings which need to log on.

Press LINK button the list and locate the IP address you just entered in the phone book. Double-click on it and you'll see the item in CONNECTED STATE column.

A button on the right you will see the icon of the newly connected system can proceed as explained in chapter CONNECT TO VISION D-IN REGISTRATION.

The P2P connection limit, and you can log on with only one device at a time. Although you may have to book more than one device, you will be required to terminate a connection before you can start a new one.

Connection through Router

The settings for remote access so far seen work when it has to do with IP addresses directly reachable. They can be reached such as two IP addresses on the same LAN (eg.



USER MANUAL D-Vision XP-RT v. 5.1

192.168.0.4 and 192.168.0.5) or two Internet IP addresses (eg. 211.172.12.34 and 220 135 254 153) that are assigned to a PC that connects to the Internet directly with its ADSL modem (with the exception of Fastweb network) .

If, however, a D-Vision machine is connected to the internet via a router, then its IP address when the Internet is no longer real, but virtual.

Take the case of a D-Vision system connected, along with other PC to a LAN that connects to the Internet through your router. The D-Vision PC (or D-Vision DVR) will have in this case a local IP address (such as 192.168.0.5), and the only one with an IP address visible to the Internet will be the router (eg.

211.172.21.43).

EXAMPLE:

- D-Vision System on LAN IP **192.168.0.5**
- Router to LAN IP 192.168.0.1 IP Router to Internet **211.172.21.43**
-

If an external D-Vision system connected to the Internet you had groped a link with the IP address of 211.172.21.43 router, this would not work because the router, even if reached, would not be able to answer. If we tried to connect with the local IP address of D-Vision system behind the router (192.168.0.5) would not have happened anyway because that address is not visible from the outside via the Internet, but only on the local LAN.

And 'then you have to operate **MAPPING OF DOORS** the router (also known as PORT FORWARDING, VIRTUAL SERVER, PORT TRANSLATION, NATP etc.) so that the router is able to

calls from D-Vision systems external to the D-Vision system downstream.

The TCP / IP ports used by default by D-Vision systems are as follows:

- D-Vision Software: **40001 PORT**
- Software Q-Vision server: **PORT 40000**
- Video recorders D-Vision DV-N: **PORT 50000**

In the previous example if we wanted to connect to a router downstream D-Vision Server, we should perform the following directing of doors:

192.168.0.5:40000 <-----> 211.175.21.43:40000

if you would instead just connect directly to the D-Vision software in P2P mode without using the D-Vision Server (see above) should direct the port 40001:

192.168.0.5:40001 <-----> 211.175.21.43:40001

The doors aforementioned they are modifiable in Device programming, but it is very advisable not to do so to avoid having to change settings

all other sentence network connection failure systems.

And 'understood that any **FIREWALL** the network must allow

the use of these doors because there communication is successful.

For instructions on how to port addressing router refer to the manual programming of the router you use, or contact the Help Desk of the manufacturer.

Connection through Router D-Vision to more systems on the same LAN

The port mapping of router explained in the previous section allows to come in in connection with a D-Vision system which is located in a downstream router. But things get complicated if downstream of the router there were 2 or more D-Vision systems.

To which D-Vision direct calls of 40001 door from the outside? To solve this problem, the D-Vision software is able to distinguish the external WAN port to the Internet from the internal LAN. In fact, two programmable settings listening ports are available:

- A port listening LAN
- A port listening WAN

Mappe		I/O	
Utenti	Database	Impaginazioni	Suoni
Porta LAN locale		40001	
Porta WAN locale		40001	

In this way it is possible to set for each D-Vision system downstream of a different router WAN port, which must be used in external calls.

EXAMPLE:

- First D-Vision system over IP LAN **192.168.0.5**
- According to D-Vision system over IP LAN **192.168.0.6**
- Router to LAN IP 192.168.0.1 IP Router to Internet **211.172.21.43**
-

In this case the ports of the two D-Vision will be changed as follows:

- D-Vision IP **192.168.0.5** LAN WAN 40001 **40002**
- D-Vision IP **192.168.0.6** LAN WAN 40001 **40003**

While the ports on the router you will map like this:

192.168.0.5:40001 <-----> 211.175.21.43:40002
192.168.0.6:40001 <-----> 211.175.21.43:40003



USER MANUAL D-Vision XP-RT v. 5.1

NOTE: The WAN ports used must be different from the LAN port.

Remotely, with the D-Vision software, it will always call the 211.175.21.43 address of the router but using port 40002 to connect to the D-Vision 1 and 40003 to connect with the D-2 Vision.

The setting of the WAN port goes set to differently from the LAN port only in this situation where the D-Vision to be accessed via the Internet through a router. In all other situations it leaves the default value equal to the LAN port

Even the D-Vision video recorders embedded DV-N include LAN and WAN, both separate of about 50000 factory.

Compatibility between D- Vision in access remote systems

The new version 5.1 D-Vision XP and D-VisionRT made everyone

the D-Vision systems absolutely

compatible with each other in remote access.

By installing on a PC D-VisionXP / RT software it is able to connect with any of the following systems:

- DVR PC-based D-VisionXP DVR PC-based
- DVR D-Vision RT standalone DV-D N-Vision
- server
-

The connection can be via D-Vision Server in Point to Point mode (P2P).

Previous versions of D-VisionXP / RT 3.xx They are not compatible with the new version 5.1 because of different network management. However, the new D-VisionXP / RT version is 5.1

can be to install

quietly on all cards that worked with the previous version (DV-XP4, DV-XP8 + TV, RT4 DV, DV-RT8).

It is therefore recommended to update all the systems may have already been installed with the new 5.1 version (see D Vision update statement).

CAUTION. The 5.1 version of D-VisionXP / RT no longer supports direct connection MODEM / MODEM. It is recommended that those who were to use not to update the version 3.xx

DDNS

D-Vision supports DDNS services that allow you to transform a variable IP address to a fixed domain name. When using a DDNS service, you can enter the DDNS domain name instead of IP address in all the above settings.



USER MANUAL D-Vision XP-RT v. 5.1

REMOTE CONTROL

Connect to the D-Vision Remote

No matter who you're connected to a PC remotely via modem, LAN or the Internet, in all cases, if you activated the TV remote with the SETTINGS button to the left of the drawer, there appear all connected PCs

in that moment. At this point you just have to double



click on the PC you want to connect and get into connection. If the double click you should be prompted to USERNAME AND PASSWORD means that the destination computer does not accept your LOGIN. Check that you have had access to the D-Vision with a user name and password that are also included in the D-Vision you want to connect.

If the connection is successful you will see the screen split in a number of sections consistent with number of cameras managed by the PC: 4 if you are running a single card, 8, 12 or 16 if multiple cards are installed. If the remote PC is not installed any D-Vision card you will see only the box with the center of the D-Vision logo. At this point you have access to various remote control functions that illustrate later.

Monitor / Register

remote

The first thing you want to do when you have made a remote connection you see the remote cameras.

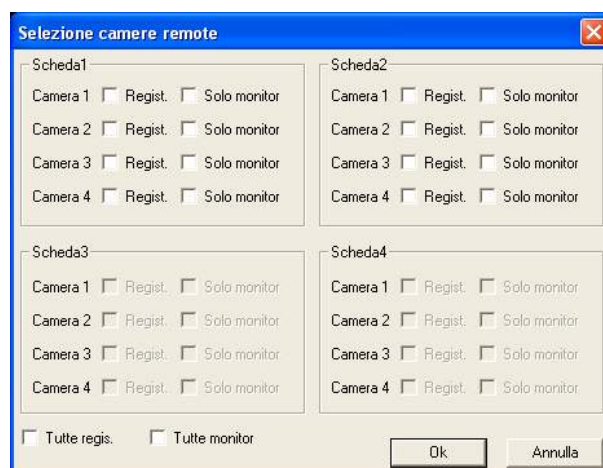
The fact that the D-Vision to which you are connected to whether or not the recording and is active or



less viewing of images, does not matter much since remote you are able to fully control the system and avviaerne to taste recording.

However, given that all operations svolgiate remotely it will also locally. as if you were telecomandando the PC where the cameras are actually connected.

Press the REC button and you'll see a dialog box to choose the cameras you wish to view.



The window can handle up to 4 cards from 4 inputs, but of course you will see only enabled cards actually installed on the site to which you linked. Select the cameras you want to see. If you select the option REGISTRATION remote camera it will also be recorded in real-time on the PC you are working on. If selected MONITOR ONLY images will only be displayed. Keep in mind when choosing the bandwidth you have available. If you are on a modem-modem connection there

should select more cameras simultaneously, because the band will not be suitable to let you see a sufficient number of frames per camera. If you are in the LAN connection, or you have a large guaranteed bandwidth, you can select

also all the cameras at the same time

Audio real-time

If the local camera is equipped with audio you can listen to the audio in real time, even remotely. The audio will be reproduced automatically clicking on the camera image. The cameras for which is available from audio listening function are identified by the icon on the right.



Image adjustment, eliminating masks, text overlay, picture-taking



USER MANUAL D-Vision XP-RT v. 5.1

While monitoring the cameras at the remote site you have access to parameters

of regulation



image, text overlay and color of the superimposed text. Keep in mind that by acting on these parameters really changed the parameters of the local machine and thus also in the local recording will be affected by your changes.

E 'can also remotely delete the masks for the detection of the movement and take pictures.

Settings

A limited number of system settings are also available by direct remote by pressing the SET button



Editable settings relate to CARD, the PERIPHERALS CAMERAS and I / O.

Several options are editable only if you log on to a D-Vision is not being recorded, otherwise not be accessible.

**USER MANUAL D-Vision XP-RT v. 5.1**

REMOTE ACCESS WITH IEXPLORER

The D-Vision program also supports remote connection via Internet Explorer. Using Internet Explorer you can connect both a PC with D-Vision cards

(so-called PC-based DVR) both to VCRs DV-N series. Obviously this is a limited access to the single vision of the cameras in real time and which does not allow all the remote operations of the D-Vision software.

Prepare Internet Explorer

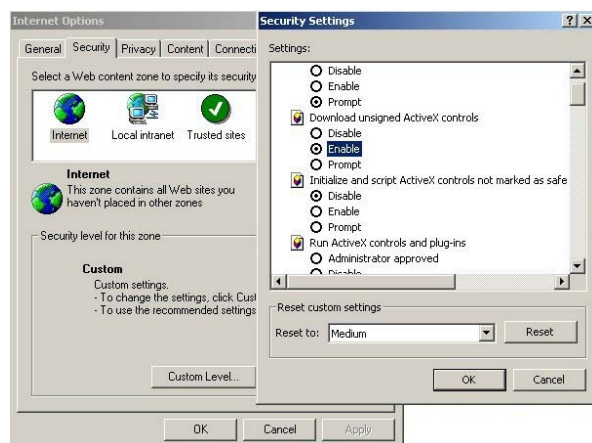
Because of the many protections in Internet Explorer you need to prepare thoroughly the security settings of the browser as shown below. This requires a careful attention, otherwise the DVR control will not work.

NOTE: The descriptions and back windows may vary slightly depending on the version of Internet Explorer installed.

1 - PROTECTION AREA INTERNET

To open Internet Explorer is to press TOOLS / INTERNET OPTIONS, then select the PROTECTION folder and select the icon of the earth INTERNET. Then press CUSTOM LEVEL. Check the following settings

- **RUN CONTROLS ACTIVE-X** select ON or ASK CONFIRMATION

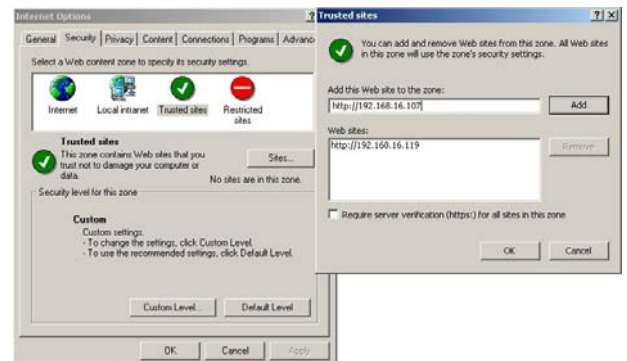


- **RUN CONTROLS ACTIVE-X** NOT MARKED AS SAFE select ON or ASK CONFIRMATION



2 - SETTING TRUSTED SITES

In itself folder TOOLS / OPTIONS INTERNET / select PROTECTION RELIABLE and click the button SITES



- Enter the address of the video recorder DV-N or PC containing cards D-Vision es. **http://192.168.0.6** Uncheck add and click on REQUEST CHECK SERVER Press CLOSE

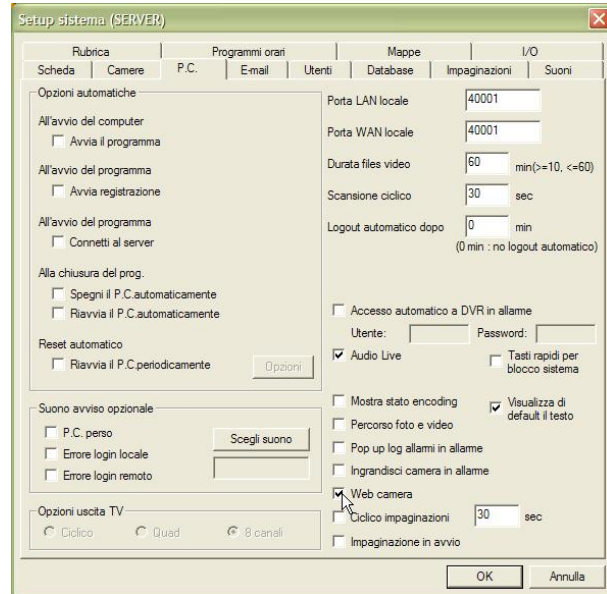
Click CUSTOM LEVEL and take the same two settings related to the ACTIVE-X controls seen earlier.

* * * NOTE TO EXPLORER 7 **** If Internet Explorer 7 has been set previously on the lower levels of protection inhibits the default access to certain web pages, including those of remote control of D-Vision DVR. This can lead to the appearance of a PAGE NOT FOUND error when you try to connect. To avoid this problem, before making the customized security settings listed above must restore DEFAULT PARAMETERS



USER MANUAL D-Vision XP-RT v. 5.1

Press LEVEL DEFAULT before accessing the personal level.



Connection Explorer

Now that you have properly set the security parameters and inserted the user in programming the DVR you can try the first link. Open Internet Explorer and in the Address box, type in the IP address of the PC with D-Vision cards or DV-N video recorder. If you use a DDNS service, you can type in the name linked to the address of your device. At connection you will be asked to enter the username and password that you entered in the DVR

IE Web Decoder

To facilitate the connection with Internet Explorer has provided a utility called IE Web Decoder. By installing the program it will automatically install the ActiveX and the Explorer configuration so there is no need to manually set the settings of

security as

shown above.



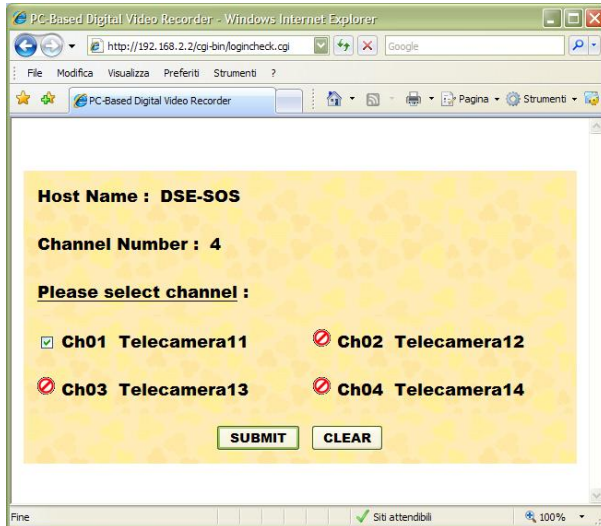
It will be necessary of course to enter a user and password found in the D-Vision program users list to which you are connecting. Immediately after pressing LOGIN you can choose which camera view during connection. Some cameras may be inaccessible depending on the associated access level to the user code entered.

Prepare the DVR

Once the D-Vision program is running on the PC which they reside capture cards PC is ready to accept a remote access via Internet Explorer. However, check that you have enabled the function WEB HOST CAMERA tab settings.



USER MANUAL D-Vision XP-RT v. 5.1

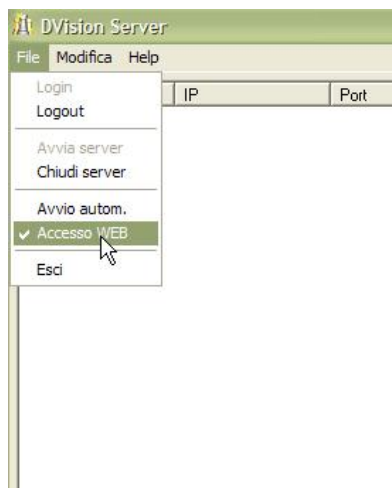


During the first execution of the procedure you will be prompted to activate ActiveX controls. Answer yes even if Internet Explorer will ask for protection constant confirmation.

Connection via IE D-Vision Server.

With Internet Explorer you can also connect to a D-Vision Server, and by that power all D-Vision Program systems connected to it. IS'

You must first enable the function WEB ACCESS in the FILE menu of D-Vision Server when logged in as administrator.



To connect through Internet Explorer, type in the Explorer address bar, type the IP address of the PC where

resides the D-Vision Server followed by an indication of 8080. Es door. <http://192.168.0.2:8080>

Once logged in you will be able to decide which D-Vision System (PC-based or stand alone DVR) connections between all those connected to the D-Vision Server.

DDNS

D-Vision supports DDNS services that allow you to transform a variable IP address to a fixed domain name. When using a DDNS service, you can enter the DDNS domain name instead of IP address in all the above settings.



USER MANUAL D-Vision XP-RT v. 5.1

Main technical data

	DV-XP4	DV-XP8 + TV	DV-RT4	DV-RT8
Slot type	PCI	PCI	PCI	PCI
video Inputs	4 (BNC connectors)	8 (BNC connectors)	4 (BNC connectors)	8 (BNC connectors)
Maximum number of cards for PCs	4 (16 inputs)	2 (16 inputs)	4 (16 inputs)	2 (16 inputs)
audio Inputs	2 (RCA connectors) + Line IN of the sound card	2 (RCA connectors) + Line IN of the sound card	4 (RCA connectors)	8 (RCA connectors)
video Outputs	-	1 TV output (RCA connector)	-	-
Video Signal compatible	Composite video 1 Vpp 75 Ohm	Composite video 1 Vpp 75 Ohm	Composite video 1 Vpp 75 Ohm	Composite video 1 Vpp 75 Ohm
Video format compatible	PAL or NTSC	PAL or NTSC	PAL or NTSC	PAL or NTSC
compatible audio signal	2 V pp 50 Ohm	2 V pp 50 Ohm	2 V pp 50 Ohm	2 V pp 50 Ohm
Size of captured frames (Resolution)	704x576 (PAL) 640x480 (NTSC)	704x576 (PAL) 640x480 (NTSC)	704x576 (PAL) 640x480 (NTSC)	704x576 (PAL) 640x480 (NTSC)
Frames / second per card	Max. 50 f / sec in PAL Max. 60 f / sec in NTSC	Max. 100 f / sec in PAL Max. 120 f / sec in PAL Max. 100 f / sec in NTSC	Max. 120 f / sec in PAL Max. 200 f / sec in NTSC	Max. 240 f / sec in PAL Max. 300 f / sec in PAL
Frames / second per video inputs (with all recording channels)	Max. 12.5 f / sec in PAL Max. 15 f / sec in NTSC	Max. 12.5 f / sec in PAL Max. 15 f / sec in NTSC	Max. 25 f / sec in PAL Max. 30 f / sec in PAL Max. 25 f / sec in PAL Max. 30 f / sec in PAL	Max. 25 f / sec in PAL Max. 30 f / sec in PAL Max. 25 f / sec in PAL Max. 30 f / sec in PAL
Frames / second per PC max. (16 inputs)	Max. 200 f / sec in PAL Max. 240 f / sec in NTSC	Max. 200 f / sec in PAL Max. 240 f / sec in NTSC	Max. 400 f / sec in PAL Max. 480 f / sec in NTSC	Max. 400 f / sec in PAL Max. 480 f / sec in NTSC
Automatic synchronization Yes		Yes	Yes	Yes
watchdog function	Yes	Yes	Yes	Yes
Compression Algorithm	VGZ Owner	VGZ Owner	VGZ Owner	VGZ Owner
Hardware Compression	-	-	H.264 (MPEG4 Part10)	H.264 (MPEG4 Part10)
Hard Disk Recording	Files of adjustable duration from 10 to 120 minutes	Files of adjustable duration from 10 to 120 minutes	Files of adjustable duration from 10 to 120 minutes	Files of adjustable duration from 10 to 120 minutes
Management of multiple Hard Disk	unlimited	unlimited	unlimited	unlimited
To save individual frames	Possible JPG	Possible JPG	Possible JPG	Possible JPG
Recording sound	24 Kbps ADPCM synchronized with the video 24 Kbps ADPCM	24 Kbps ADPCM synchronized with the video 24 Kbps ADPCM	24 Kbps ADPCM synchronized with the video 24 Kbps ADPCM	24 Kbps ADPCM synchronized with the video 24 Kbps ADPCM
playing audio	Real-time local and remote	Real-time local and remote	Real-time local and remote	Real-time local and remote