

**DK-CS1W ( pin-hole lens)**

**DK-CS2W ( fish-eye lens)**

**Camera with video recorder for concealment with radio control**



**Product description**

DK-CS1W / DK-CS2W is a VCR equipped with a built-in camera provided on board, without container so as to facilitate the insertion into objects. The card is protected by a black heat shrinkable tube in such a way that it can be handled without damaging the components. The two versions and DK DK-CS1W-CS2W differ in the lens:

DK-CS1B pin-hole lens for concealment DK-CS2B fisheye lens minilente

**Battery Connection**

The camera is able to operate with only the power of its own battery. There are several battery options with different governments.

|  |  |
|--|--|
| DK-BL1<br>Autonomy 2 hours                               |  |
| DK-BL2<br>Autonomy about 12 hours (supplied as standard) |  |
| DK-BL3 / DK-BL3F<br>Battery life about 24 hours          |  |

Together the apparatus is provided with a DK-BL2 battery, additional batteries can be ordered separately.

The standard battery provides about 12 hours of recording. This reference autonomy should be considered necessarily indicative since it may vary depending on the state of battery charge and operation in the DVR recording.

The fact that it is performing a continuous recording or motion detection does not change much the autonomy of the system even if the motion detection consumption is slightly lower.

Note that these products may remain on standby waiting for command from the radio remote control. This DVR mode consumes only 6mAh so with standard battery (2400 mAh) can remain on standby for several days.

To use the machine is necessary to connect the battery to the white plug.

These versions do not support remote control with continuous recording with mains power.

**Movie Store**

The video files are stored on a micro SD card (not included) into AVI format. The movies have HD 1280x720 resolution at 30 f / sec.

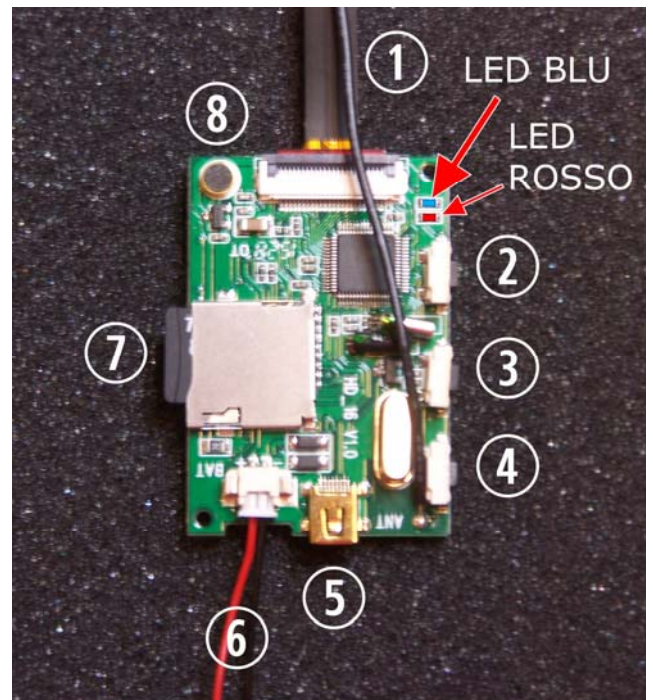
E can use any brand of microSD up to 32 GB capacity. A 32GB SD card can hold about 6.5 hours of recording.

Once exhausted the memory capacity DVR is able to continue recording over the oldest files.

The movie is divided into files from 1 minute motion in the recording and from 5 minutes in the continuous recording.

**Product Composition**

- DVR Card Camera Battery DK-BL2
- 
- USB cable for PC connection with video output Remote control
- 



1 - Lens with flat cable

2 - ON / OFF

3 - Record button Continued 4 - Record button Motion Detection 5 - USB port for PC connection cable included 6 - Battery

7 - Slot for Micro SD card up to 32GB (not included) 8 - Built-in microphone for audio  
BLUE LED - Indicates the RED LED DVR status indicates battery charging

### Insert the SD Card

The first thing to do is to insert the micro SD card slot. The package does not include the SD card that must be purchased separately.

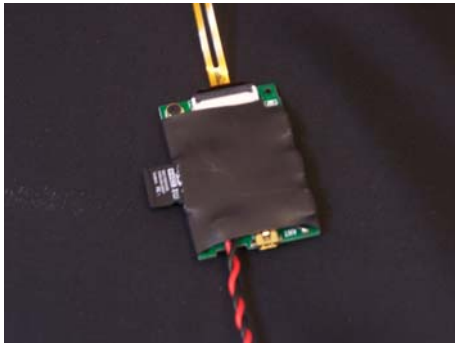
E 'can use any micro SD provided in

**CLASS 10.** The class 10 indicates the write speed of the card (10 MB / s) it is usually marked on the card with the symbol



The use of SD cards with speeds of less than 10 MB / s: class 6.4 or 2, leading to unstable operation of the DVR or, in the worst cases, the non-operation.

Pay attention to the direction of insertion of the SD card that gently slide in its seat only with the gold contacts facing the tab. Gently press the card until you hear the latch. To remove the card press lightly to release the retainer and pull it out.



### Charging the battery

Before using the equipment it is advisable to fully charge the battery. To do this connect the USB port of the DVR to the computer with the cable provided.

The BLUE and RED LED will light up simultaneously. Charging is complete, the RED LED will turn off. E 'can also charge the battery by connecting the DVR to a USB network adapter like RE-AL4USB (sold separately).

It 'also available as an optional accessory self DK-BCL1 charger that can recharge the battery without being attached to the DVR. Complete recharging takes several hours depending on the type of battery and the state of the initial charge. It is advisable to let comfortably complete recharge overnight.

### mounting

DK-CS1W is a DVR from concealment. E 'expected to be positioned behind a masking surface in which is practiced a hole recovery of at least 1 mm. in diameter.

In DK-CS2W model the cloaking hole must be at least 1 cm. To which can not be made completely invisible.

Once recording has started is the DVR position behind the mask surface. Note that these models have remote control so you can also hide the DVR in standby mode and start recording when needed.

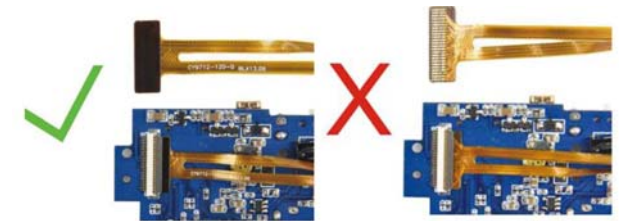
E 'can hide the DVR in any container, such as a pack of cigarettes, an ornament, etc. If the masking surface should be translucent and not perfectly opaque, it may be advisable to mask the operation LED does not reveal the presence of the DVR.

Here's an example of installation, performed using the magnetic accessory DK-CSM (not included)



The goal of flat cable is already connected to the card and should be handled with care as damage to the flat cable during use is not covered by warranty.

You can buy replacement objectives. To install them open the lever of the connector and gently insert the flat cable in the correct sense of the connector as in the figure.



### RCA video output

DK-CS1W / 2W have a RCA video output that can be useful to check the framing. The RCA video output is present in the included USB cable and can be connected to a monitor, TV or an external VCR.

The RCA video output can also be used during recording.

The RCA video output can not be used to back recorded video clips but only to display the image taken by the camera in real time.

### Turning on the DVR and control with an onboard buttons

Turn on the DK-CS1W / 2W by pressing the power button 2 (see figure). The DVR will start and the blue LED turns on steady. Soon after, automatically, the blue LED will flash slowly a few times to indicate that recording in motion detection mode (on motion detection is activated). The automatic start motion detection is in fact provided in the internal programming of the device for which there is no need to press the 4 motion recording button.

After a few flashes the blue LED turns off and the unit enters the motion recording. It will record

They will occur automatically whenever the front of the lens movements.

To stop motion recording, press the button 4 that controls the motion detection. Stopping recording the blue LED will light steadily to indicate that the device is waiting for commands. To start continuous recording, press the button

3. The blue LED blinks quickly a few times to indicate that the continuous recording is activated. To stop

continuous recording press

3 button again.

Stopping recording the blue LED will light steadily to indicate that the device is waiting for commands. To turn off the device and avoid unnecessary consumption of battery press the power button 2. The blue LED will blink 1 times and the DVR turns off.

## LED indications

|                              |   |
|------------------------------|---|
| Blue LED on for 2 sec.       | Switching on the DVR  |
| Blue LED flashes 11 times    | DVR Shutdown  |
| Led Blue 4/5 slow flashes    | Start registration<br>motion  |
| Led Blue 4/5 quick flashes   | Start registration<br>keep it going   |
| Blue LED on                  | Stand by - commands Waiting   |
| Red LED access               | Battery charging  |
| off red LED                  | Battery not charging because not<br>connected to charging<br>or<br>why<br>fully charged |
| Continuous flashing blue LED | SD card not present or not supported  |

## Turning on the DVR and control with radio control

The DVR comes with a remote control that allows you to send commands to the DVR up to a distance of about 10 m even if it is hidden and not visible.



The remote control has four buttons: A - Power on / off B - I shoot

C - D Continuous recording - Recording motion

The remote control allows the same command just described for the buttons on the board.

Pressing A will turn on your DVR and start automatically the motion recording.

The buttons C (continuous recording) and D (motion recording) have the same functions as the corresponding buttons on the card.

The B button allows you to take pictures when needed, function not available with the buttons on the board.

## Connection to PC

To view the files saved in the DVR must connect the unit to a PC via the supplied USB cable.

By connecting the DK-CS1W / 2W to your PC you can use the device as a removable disk to manage the files stored in memory. It is not required to install specific drivers.

Use Windows Explorer to browse the contents of memory.

The video and audio can be played with common media players like Windows Media Player, VLC etc. E' can play files directly from microSD memory group to view a preview of the content, but for perfect playback of audio / video screen you must save the file on the hard disk of the computer.

## Change the DATE and TIME

The DVR sovraimprime date and time registration. The date stamp and time can not be excluded. To change the date and time, proceed as follows:

- Connect your device to PC
- Insert this CD included with your device, and then explore the files stored on it
- Start the program WRITETIME.EXE
- UPDATE Press and confirm by checking that the device directory is correct.
- The program will synchronize the date and time of the DVR with the PC.
- Exit program
- Unplug the device and start an alternative to using the Write Time program if you

do not have a Windows PC, you can do the following:

- Create a TXT file with a text editor such as NOTEPAD and name **time.txt**
- In the file write the date and time in the way indicated in following example:  
**09.19.2015 11:29:00**  
We should respect the exact syntax and start writing the upper left corner.
- Copy the **time.txt** file you just created in the root of the memory of the device (next to the DCIM folder).
- Verify that the DCIM folder is empty, possibly delete video files.
- Disconnect the device from your PC and start. It will be stored in the new date and TXT file is deleted automatically.

